

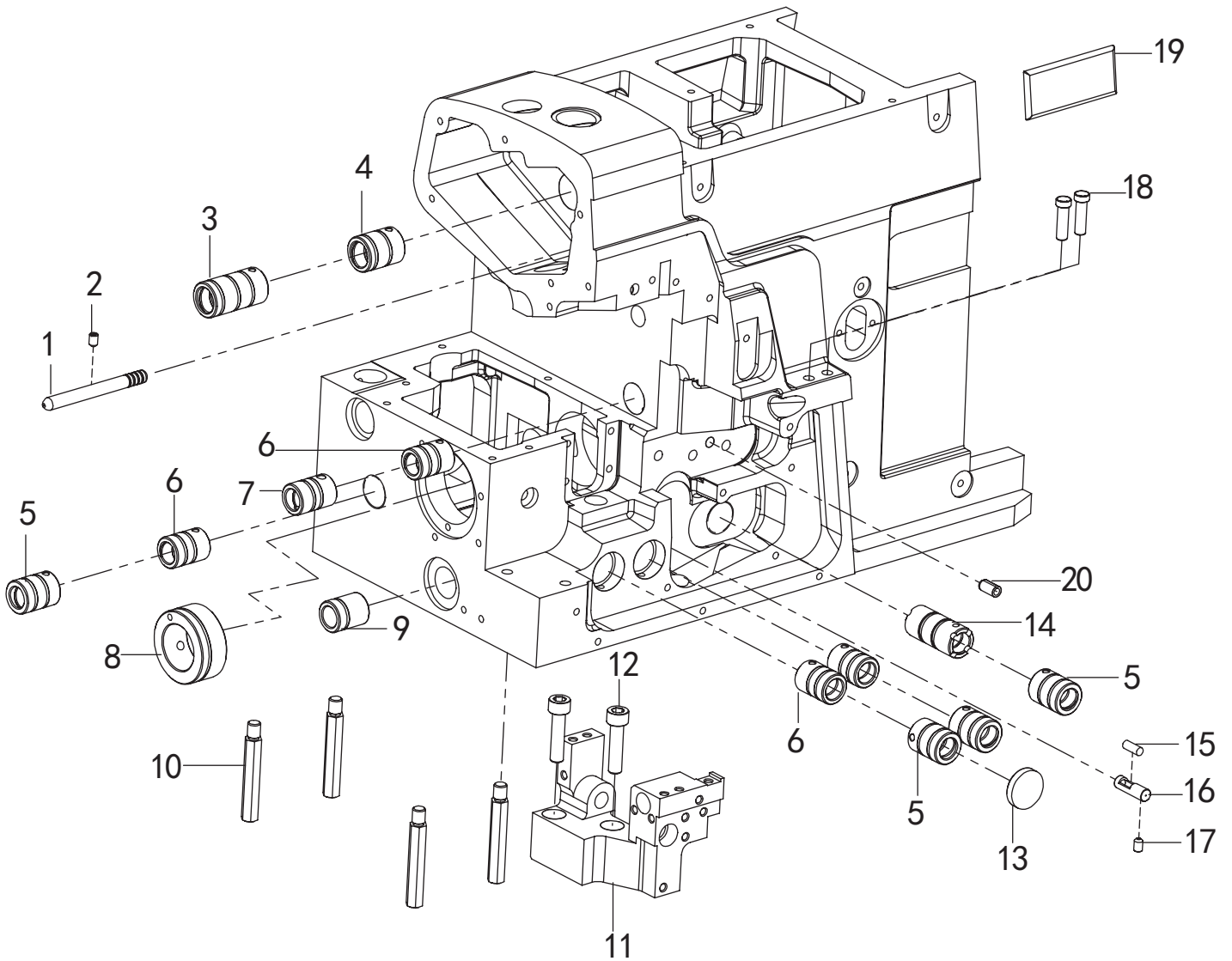
超高速包缝机零件图册

Direct-drive Super High-speed Automatic Overlock

Sewing machine series

999 V1.0

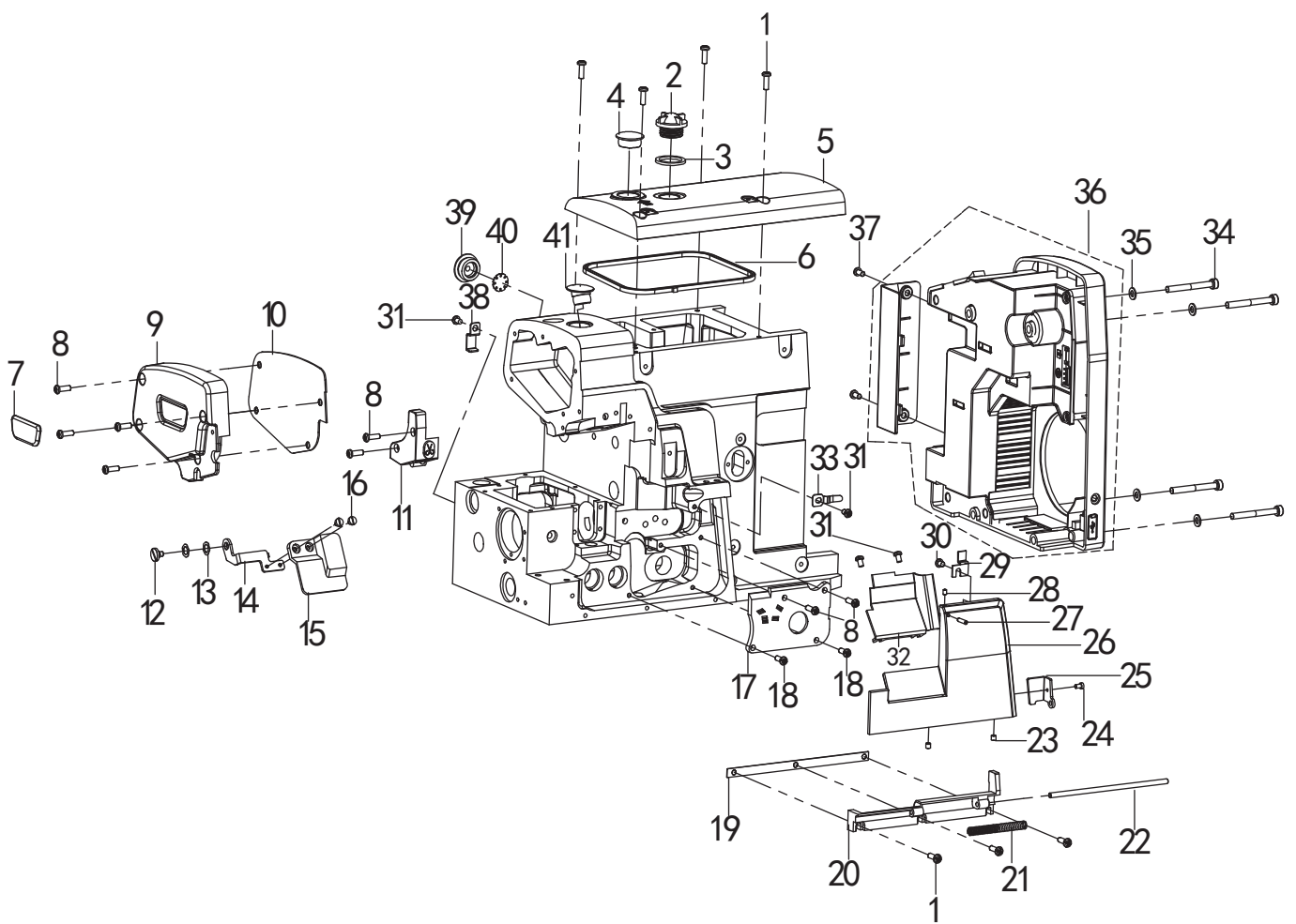
一、机壳部件/Machine Bed Frame



一、机壳部件/Machine Bed Frame

序号 Ref. No	图号 Part. No	零件名称 Part name	数量/Number		
			三线 Three-thread	四线 Four-thread	五线 Five-thread
1	188010401	直喷油管/Direct nozzle	1	1	1
2	014501032	内六角凹端紧定螺钉M5-10/Screw M5-10	1	1	1
3	188080701	针杆传动轴左套/Needle Bar Drive Shaft Left Sleeve	1	1	1
4	188080201	传动轴右套/Drive Shaft Left Sleeve	1	1	1
5	188110801	上弯针轴前套/Upper Loper Shaft Front Sleeve	3	3	4
6	188120101	下弯针轴后套/Back Sleeve Of Upper Loper Shaft	3	3	4
7	188042401	上刀轴前套/Front Cover	1	1	1
8	188042401	主轴中套/Spindle Sleeve	1	1	1
9	188150901	差动轴套/Differential Cover	1	1	1
10	188010101	支柱/Pillar	4	4	4
11	188010701	针板支座/Needle Plate Support	1	1	1
12	018062532	内六角圆柱头螺钉M6-25/Screw M6-25	2	2	2
13	188010801	橡皮塞/Rubber Stopper	1	1	0
14	188110501	上弯针轴后套/Axle Sleeve	1	1	1
15	188011501	过油管油棉/Tubing Oil Cotton	1	1	1
16	188010501	过油管(短)/Tubing (short)	1	1	1
17	012400532	内六角平端紧定螺钉M4-5/Screw M4-5	1	1	1
18	188010601	过线管/Line Pipe	2	2	2
19	6063328	商标牌/Trademark	1	1	1
20	188010301	弹簧销/Spring pin	1	1	1

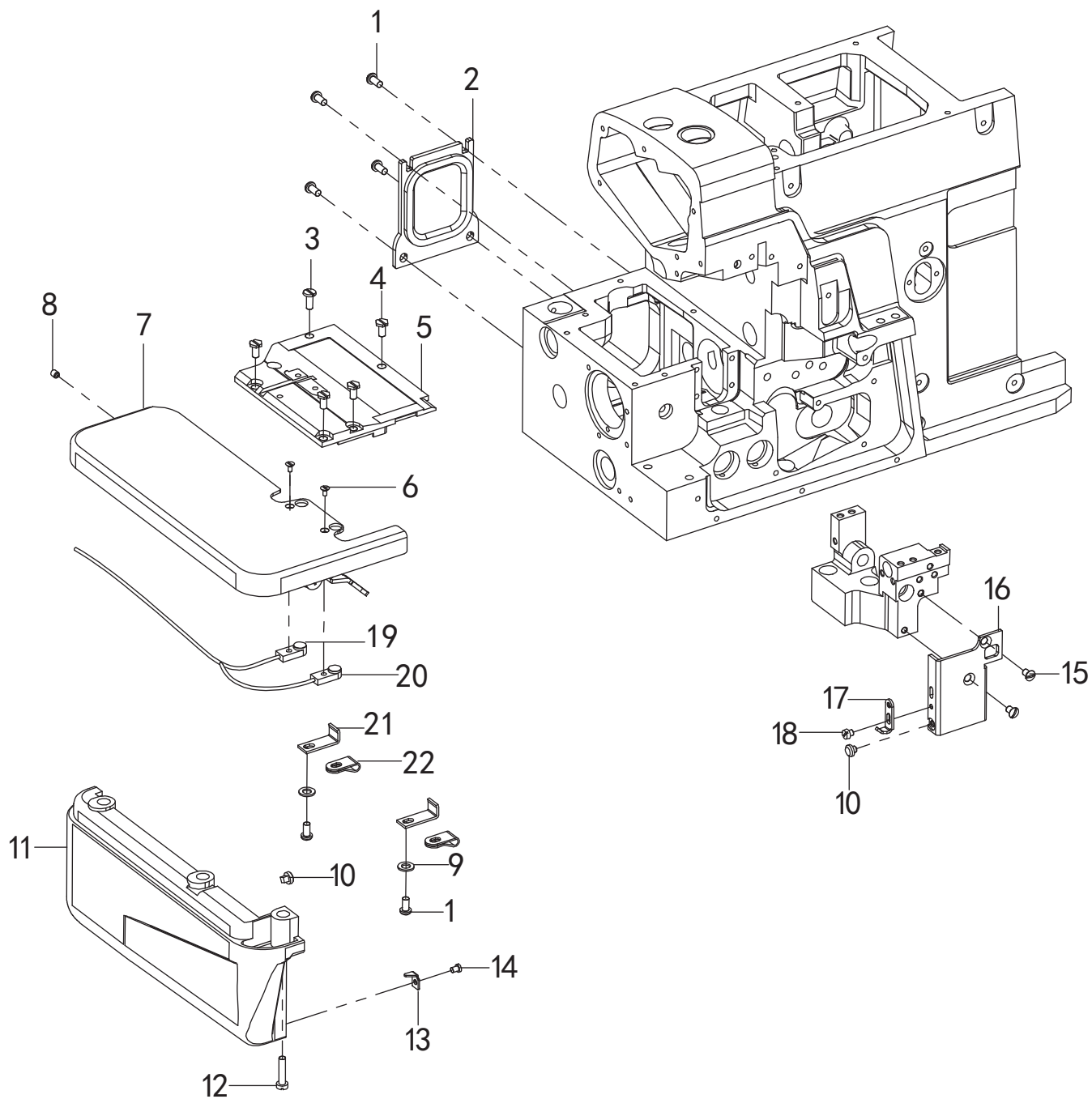
二、机壳机罩部分 (1) /Cover (1)



二、机壳机罩部分 (1) /Cover (1)

序号 Ref. No	图号 Part. No	零件名称 Part name	数量/Number		
			三线 Three-thread	四线 Four-thread	五线 Five-thread
1	188250115	一带十字盘头螺钉M4-12(大帽) /Screw M4-12	7	7	7
2	188020301	油视窗/Oil Window	1	1	1
3	188020401	油视窗垫/Oil Window Pad	1	1	1
4	188020501	上盖油塞/Cover Oil Plug	1	1	1
5	188020101	上盖/Upper Cover	1	1	1
6	188020201	上盖垫/Cover Pad	1	1	1
7	6063330	DM880D/DM880D	1	1	1
8	062401212	一带十字盘头螺钉M4-12(小帽) /Screw M4-12	8	8	8
9	188020801	侧盖/Side Cover	1	1	1
10	188020901	侧盖垫/Side Cover Cushion	1	1	1
11	188021401	灯组件/Lamp assembly	1	1	1
12	188021001	护目罩支架段螺钉/Shield Bracket Segment Screw	1	1	1
13	188021101	波形垫片/Wave Gasket	2	2	2
14	188021201	护目镜支架/Goggles Bracket	1	1	1
15	188021302	护目镜/Goggles	1	1	1
16	188250102	护目镜/观察镜螺钉M3-4/Goggles Screw M3-4	2	2	2
17	188021501	上弯针前盖/Upper Looper Front Cover	1	1	1
18	062401012	一带十字盘头螺钉M4-10/Screw M4-10	2	2	2
19	188021601-1	铰链座垫/Hinge Seat Pad	1	1	1
20	188021601	铰链座/Hinge Seat	1	1	1
21	188021801	铰链簧/Hinge Spring	1	1	1
22	188021701	铰链/Hinge	1	1	1
23	014040432	内六角凹端紧定螺钉M4-4/Screw M4-4	2	2	2
24	188120602	下弯针护针螺钉M3-5(小帽) /Screw M3-5	1	1	1
25	188022201	前盖防转压板/Anti rotation pressing plate	1	1	1
26	188021901	前盖/The Front Cover	1	1	1
27	188022101	前罩板顶丝/Front Cover Top Wire	1	1	1
28	014300432	内六角凹端紧定螺钉M3-4/Screw M3-4	1	1	1
29	188022301	前盖锁紧板/Front Cover Locking Plate	1	1	1
30	062400512	一带十字盘头螺钉M4-5/Screw M4-5	1	1	1
31	062400612	一带十字盘头螺钉M4-6/Screw M4-6	4	4	4
32	188022001	前盖罩板/Front Cover Plate	1	1	1
33	188022401	前盖锁紧板簧/Front Cover Locking Leaf Spring	1	1	1
34	018504532	内六角圆柱头螺钉M5-45/Screw M5-45	4	4	4
35	025050132	垫圈 5/Washer 5	4	4	4
36	188022509	电控组件/Electronic Control Components	1	1	1
37	062400812	一带十字盘头螺钉M4-8/Screw M4-8	2	2	2
38	115140301	电线夹U2/Crimping Board	1	1	1
39	188020601	上弯针轴孔塞/Upper Looper Shaft Hole Plug	1	1	1
40	188020601-1	上弯针轴孔塞 过滤片/Shaft Hole Plug Filter	1	1	1

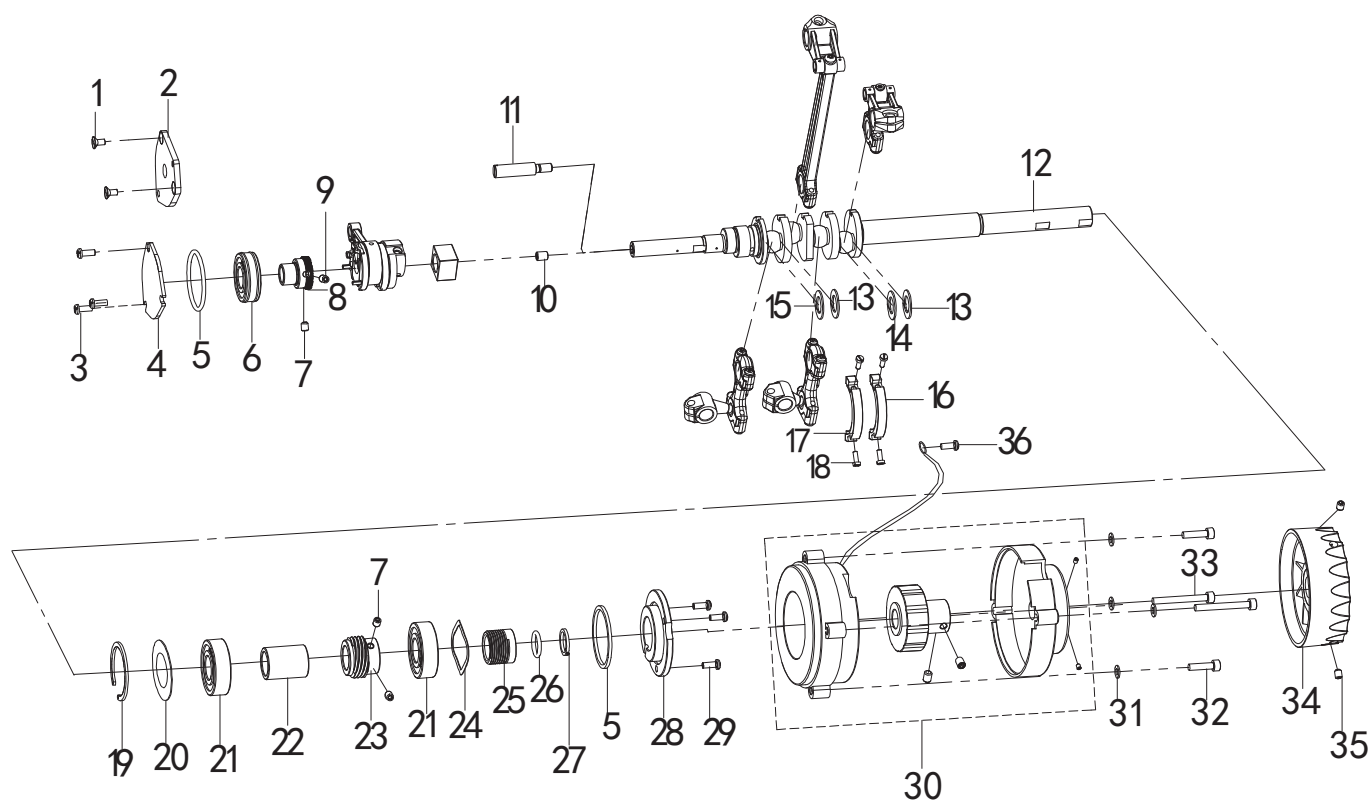
三、机壳机罩部分 (2) /Cover (2)



三、机壳机罩部分 (2) /Cover (2)

序号 Ref. No	图号 Part. No	零件名称 Part name	数量/Number		
			三线 Three-thread	四线 Four-thread	五线 Five-thread
1	062400812	一带十字盘头螺钉M4-8/Screw M4-8	6	6	6
2	188030101	后盖/Back Cover	1	1	1
3	188250113	左上盖螺钉M4-10/Left Cover Screw M4-10	1	1	1
4	188030901	外六角螺钉M4-8/Hexagon Screw M4-8	4	4	4
5	188030201	左盖/Left Cover	1	1	1
6	064300633	一字沉头螺钉M3-6/Screw M3-6	2	2	2
7	188030401	缝台组件/Thread Sewing table	1	1	1
8	012400532	内六角平端紧定螺钉M4-6/Screw M4-6	1	1	1
9	025050132	垫圈5/Washer 5	2	2	2
10	188030601	减震垫/Cushion	2	2	2
11	188030501	缝台罩壳/Seam Cover	1	1	1
12	188250109	一字缝台螺钉M4-8/Screw M4-18	1	1	1
13	188031001	下罩壳压板/Lower Cover Pressure Plate	1	1	1
14	188250101	压线板螺钉M3-4.5/Screw M3-4.5	1	1	1
15	188100201	针板螺钉M4-7/Screw M4-7	2	2	2
16	188030801	挡板/Baffle	1	1	1
17	188030701	压板/Pressure Plate	1	1	1
18	188090601	针谷螺钉M3.5-6	1	1	1
19	188220701	缝台后感应装置/behind sewing table	1	1	1
20	188220601	缝台前感应装置/in front of sewing table	1	1	1
21	188031102	电线夹/Cable clip	2	2	2
22	188031103	光眼电线夹/Light eye wire clip	2	2	2

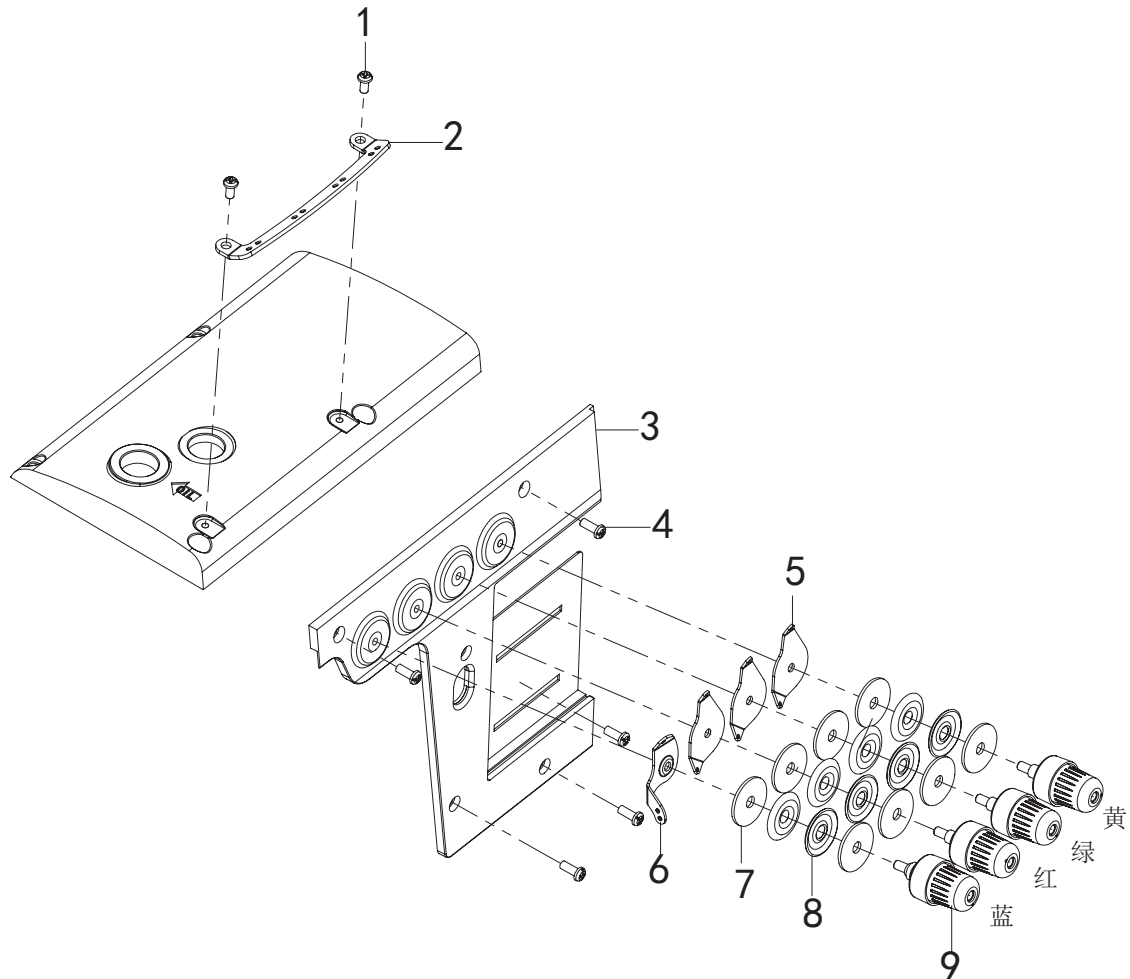
四、主轴部件/Crank Drive Mechanism



四、主轴部件/Crank Drive Mechanism

序号 Ref. No	图号 Part. No	零件名称 Part name	数量/Number		
			三线 Three-thread	四线 Four-thread	五线 Five-thread
1	188162403	牙架挡油板螺钉M4-8/Screw M4-8	0	0	2
2	188040102	轴承左端盖/Bearing left end cover	0	0	1
3	062400812	一带十字盘头螺钉M4-8/Screw M4-8	3	3	0
4	188040101	轴承左端盖/Bearing left end cover	1	1	0
5	188041901	右端盖O形圈/Right end cover o-ring	2	2	2
6	188040401	深沟球轴承 6202 双槽/ball bearing 6202	1	1	1
7	014500532	内六角凹端紧定螺钉M5-5/Screw M5-5	3	3	3
8	188040301	棘轮/Ratcher	1	1	1
9	014501032	内六角凹端紧定螺钉M5-10/Screw M5-10	1	1	1
10	188040601	油量调节螺钉M6-8/Screw M6-8	1	1	0
11	188040501	打线凸轮轴/Wire camshaft	0	0	1
12	188040801-7	主轴(A款) /Spindle	1	1	0
12.1	188040801-9	主轴(五线0.55款) /Spindle	0	0	1
13	188041001	橡胶防撞圈0.9/Rubber bumper 0.9	2	2	2
14	188041003	橡胶防撞圈1.4/Rubber bumper 1.4	1	1	1
15	188041002	橡胶防撞圈1.2/Rubber bumper 1.2	1	1	1
16	188040902	平衡块2/Balance weight 2	1	1	1
17	188040901	平衡块1/Balance weight 1	1	1	1
18	060030812	平头螺钉M3-8/Screw M3-8	4	4	4
19	188041101	止动环/Stop ring	1	1	1
20	188042501	垫圈/Washer	1	1	1
21	188041201	深沟球轴承 6203-2S/ball bearing 6203-2S	2	2	2
22	188041301	限位套/Limit sleeve	1	1	1
23	188041401	油泵蜗杆/Oil pump worm	1	1	1
24	188041501	主轴波形垫圈/Spindle wave washer	1	1	1
25	188041601	回油套/Oil return sleeve	1	1	1
26	188041701	回油套O形圈/Oil return sleeve O-ring	1	1	1
27	188041801	垫圈/Washer	1	1	1
28	188042001	右端盖/Right end cap	1	1	1
29	062401012	一带十字盘头螺钉 M4-10/Screw M4-10	3	3	3
30	188042103	主轴伺服电机/Spindle servo motor	1	1	1
31	025050132	垫圈/Washer	4	4	4
32	018503032	内六角圆柱头螺钉M5-30/Screw M5-30	2	2	2
33	018504532	内六角圆柱头螺钉M5-45/Screw M5-45	2	2	2
34	188042301	手轮/Handwheel	1	1	1
35	188120101	下弯针轴后套/Back Sleeve	3	3	4

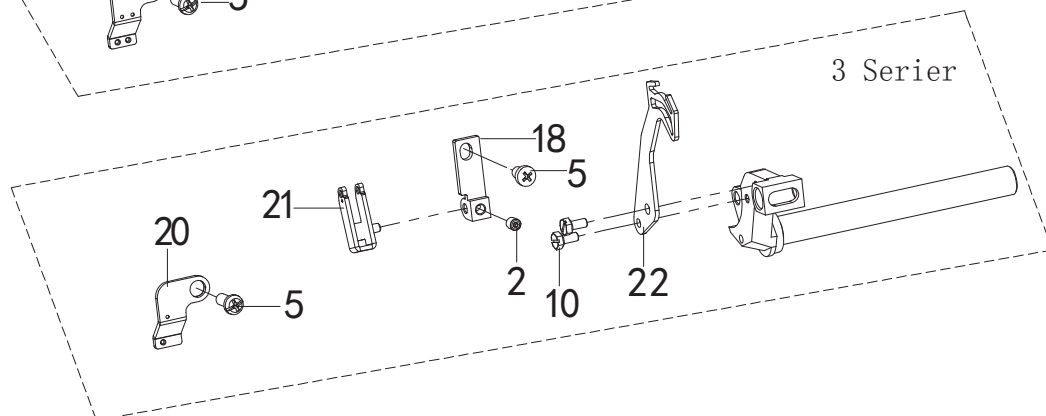
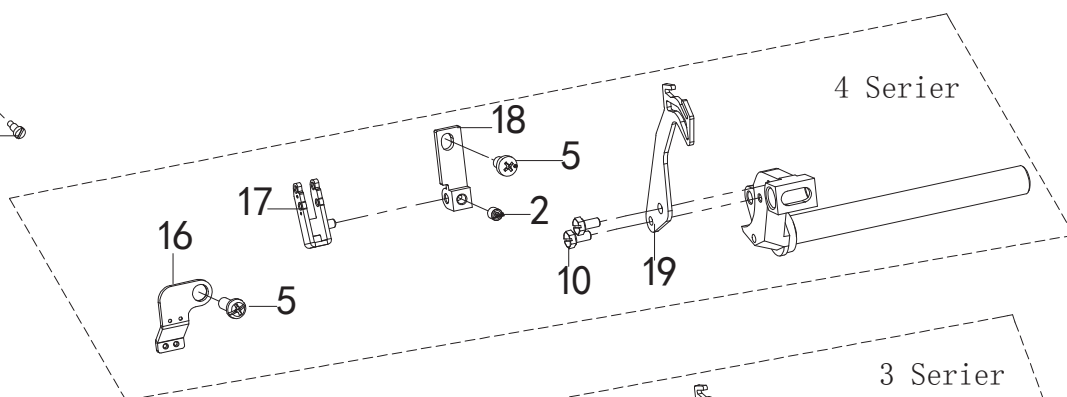
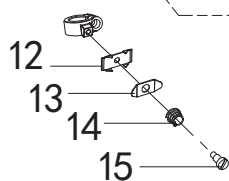
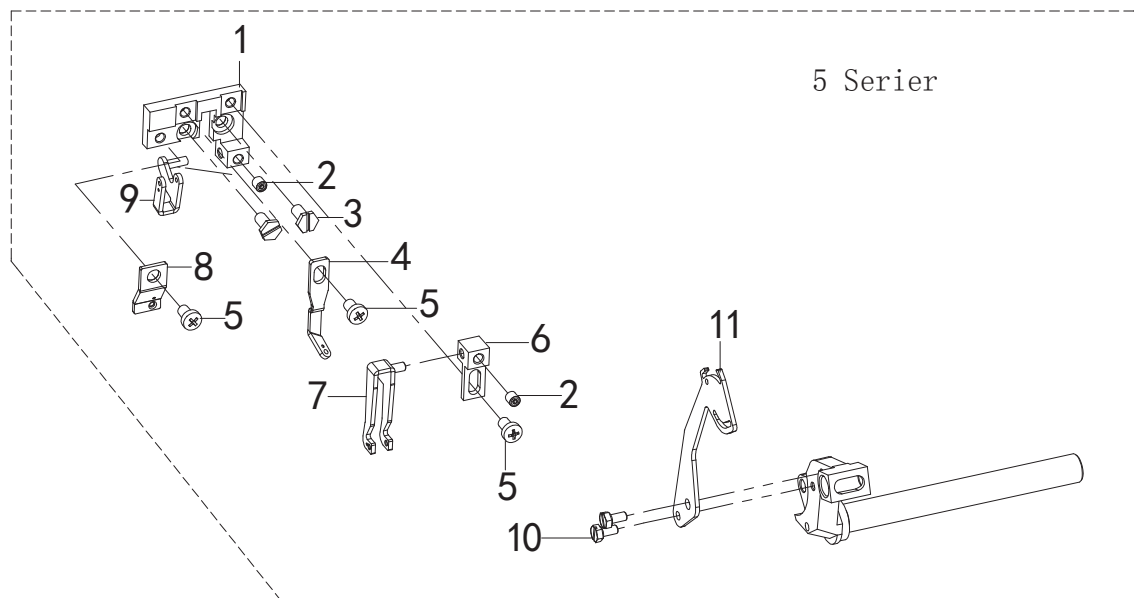
五、夹线部位/Thread Tension Mechanism



五、夹线部位/Thread Tension Mechanism

序号 Ref. No	图号 Part. No	零件名称 Part name	数量/Number		
			三线 Three-thread	四线 Four-thread	五线 Five-thread
1	062400812	一带十字盘头螺钉M4-8/Screw M4-8	2	2	2
2	188050101	总过线板/Total line board	1	1	1
3	188051101	前塑料板/Front plastic plate	1	1	1
4	062401012	一带十字盘头螺钉M4-10/Screw M4-10	5	5	5
5	188050301	夹线过线板/Wire clamping board	2	3	3
6	188050201	机针夹线过线板/Needle thread clamping board	1	1	1
7	188050501	过线片防震垫/Anti-vibration pad	6	8	8
8	188050401-2	夹线片/Wire pass	6	8	8
9	188050401-1	夹线器组件(四件套) /Thread clamp asm	1	1	1

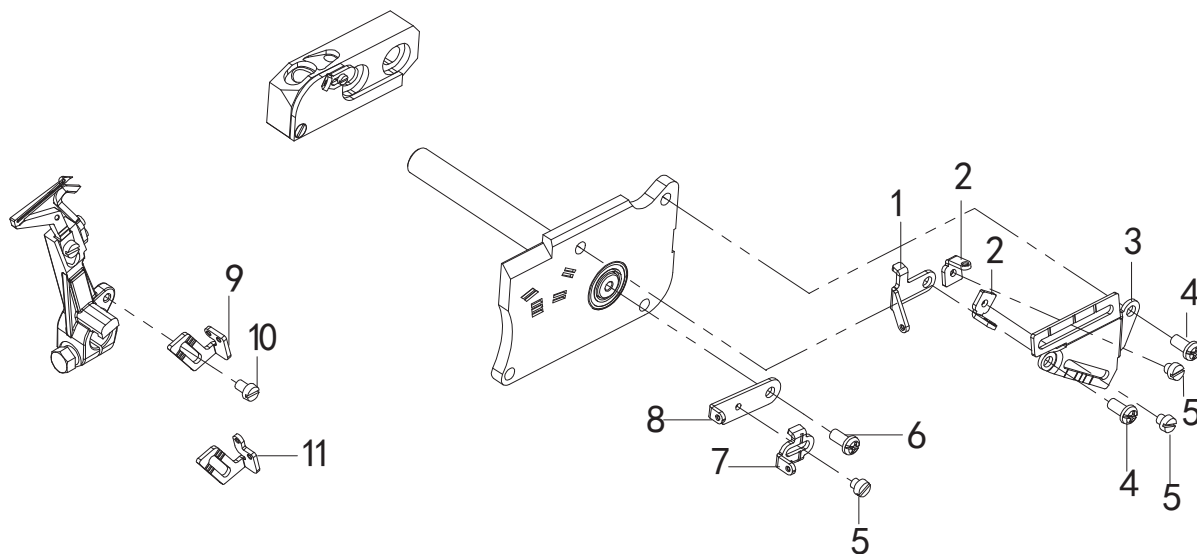
六、过线机构 (1) / Thread Guid and Thread Takeup (1)



六、过线机构 (1) /Thread Guid and Thread Takeup (1)

序号 Ref. No	图号 Part. No	零件名称 Part name	数量/Number		
			三线 Three-thread	四线 Four-thread	五线 Five-thread
1	188060401	五线过线板座/Bracket	0	0	1
2	014040432	内六角平端紧定螺钉M4-4/Screw M4-4	1	1	2
3	188030901	外六角螺钉M4-8/Hexagon Screw M4-8	0	0	2
4	188060801	链线过线板 (长) /Chain line board	0	0	1
5	062400512	一带十字盘头螺钉M4-5/Screw M4-5	2	2	3
6	188060501	二眼过线支架/Two eye line bracket	0	0	1
7	188060701	单眼过线板/Single eye line board	0	0	1
8	188060901	机针单眼过线板/Bracket	0	0	1
9	188060601	二眼过线板/Second eye line board	0	0	1
10	188100701	护针螺钉M3-5/Screw M3-5	2	2	2
11	188061002	挑线片/Take-up piece	0	0	1
12	188061101	拦线片/Block board	1	1	1
13	188061201	压线片/Crimping board	1	1	1
14	188061301	压簧/Compression spring	1	1	1
15	188061401	轴位螺钉/Axial screw	1	1	1
16	188060301	双眼机针过线板/Bracket	0	1	0
17	188060201	双眼挑线过线板/Bracket	0	1	0
18	188060101	过线板座/Bracket	1	1	0
19	188061001	挑线片/Take-up piece	0	1	0
20	188060302	单眼机针过线板/Bracket	1	0	0
21	188060202	单眼挑线过线板/Bracket	1	0	0
22	188061004	挑线片/Take-up piece	1	0	0

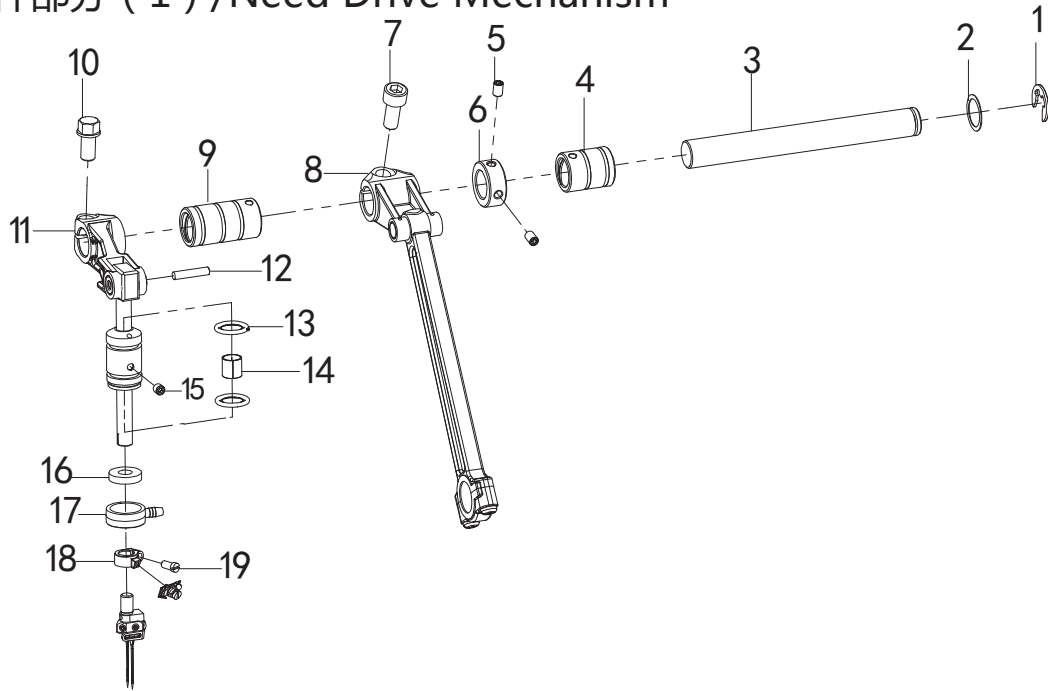
七、过线机构 (2) /Thread Guid and Thread Takeup (2)



七、过线机构 (2) /Thread Guid and Thread Takeup (2)

序号 Ref. No	图号 Part. No	零件名称 Part name	数量/Number		
			三线 Three-thread	四线 Four-thread	五线 Five-thread
1	188070201	上弯针过线架/Wire rack	1	1	1
2	188070501	上弯针过线板/Needle thread board	2	2	2
3	188070101	过线板调节架/Adjusting frame	1	1	1
4	062401212	一带十字盘头螺钉M4-12(小帽)/Screw M4-12	2	2	2
5	188070301	上弯针过线板螺钉M3-4 (大帽)/Screw M3-4	3	3	3
6	062400612	一带十字盘头螺钉M4-6/Screw M4-6	1	1	1
7	188070601	下弯针挑线板/Lower needle take-up board	1	1	1
8	188070701	上弯针挑线板/Upper needle take-up plate	1	1	1
9	188070901	弯针挑线架/Looper take-up frame	1	1	0
10	060350612	平头螺钉M3.5-6/Screw M3.5-6	1	1	1
11	188070902	弯针挑线架/Looper take-up frame	0	0	1

八、针杆部分 (1) /Need Drive Mechanism

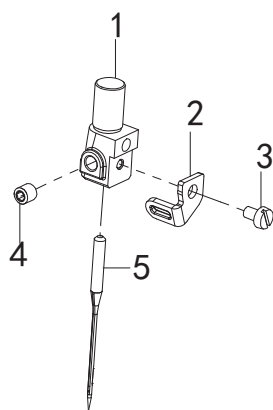


八、针杆部分 (1) /Need Drive Mechanism

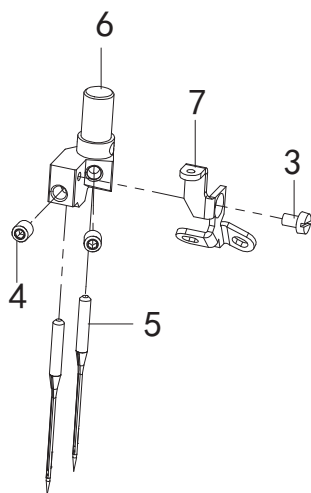
序号 Ref. No	图号 Part. No	零件名称 Part name	数量/Number		
			三线 Three-thread	四线 Four-thread	五线 Five-thread
1	048080342	开口挡圈E8/Circlip E8	1	1	1
2	188080101	摩擦片/Friction plate	1	1	1
3	188080801	针杆传动轴/Transmission shaft	1	1	1
4	188080201	传动轴右套/Drive shaft right sleeve	1	1	1
5	014040432	内六角凹端紧定螺钉M4-4/Screw M4-4	2	2	2
6	188080301	挡圈/Retaining ring	1	1	1
7	018601232	内六角圆柱头螺钉M6-0.75-12/Screw M6-0.75-12	1	1	1
8	188080401-2	针杆驱动轴球连杆组件/Drive shaft ball link asm	1	1	1
9	188080701	传动轴左套/Drive shaft left sleeve	1	1	1
10	188080601	针杆摆动架螺钉M6-12/Screw M6-12	1	1	1
11	188081101	针杆组件/Needle bar	1	1	1
12	188081701	针杆摆动架销棉线/Cotton	1	1	1
13	188081501	针杆套O形圈/O-ring	2	2	2
14	188081601	针杆套油毡/Needle rod sleeve felt	1	1	1
15	188080602	针杆螺钉(尖头) M4-5/Screw M4-5	1	1	1
16	188201001	针杆回油毡/Back to linoleum	1	1	1
17	188200901	针杆回油套/Oil return sleeve	1	1	1
18	188081201	针杆过线圈/Coil	1	1	1
19	188081301	针杆过线圈螺钉/Screw	1	1	1

九、针杆部分 (2) /Need Drive Mechanism (2)

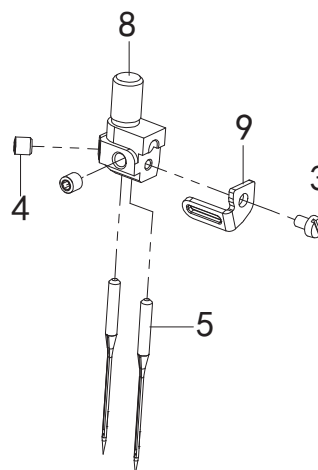
3 Serier



5 Serier



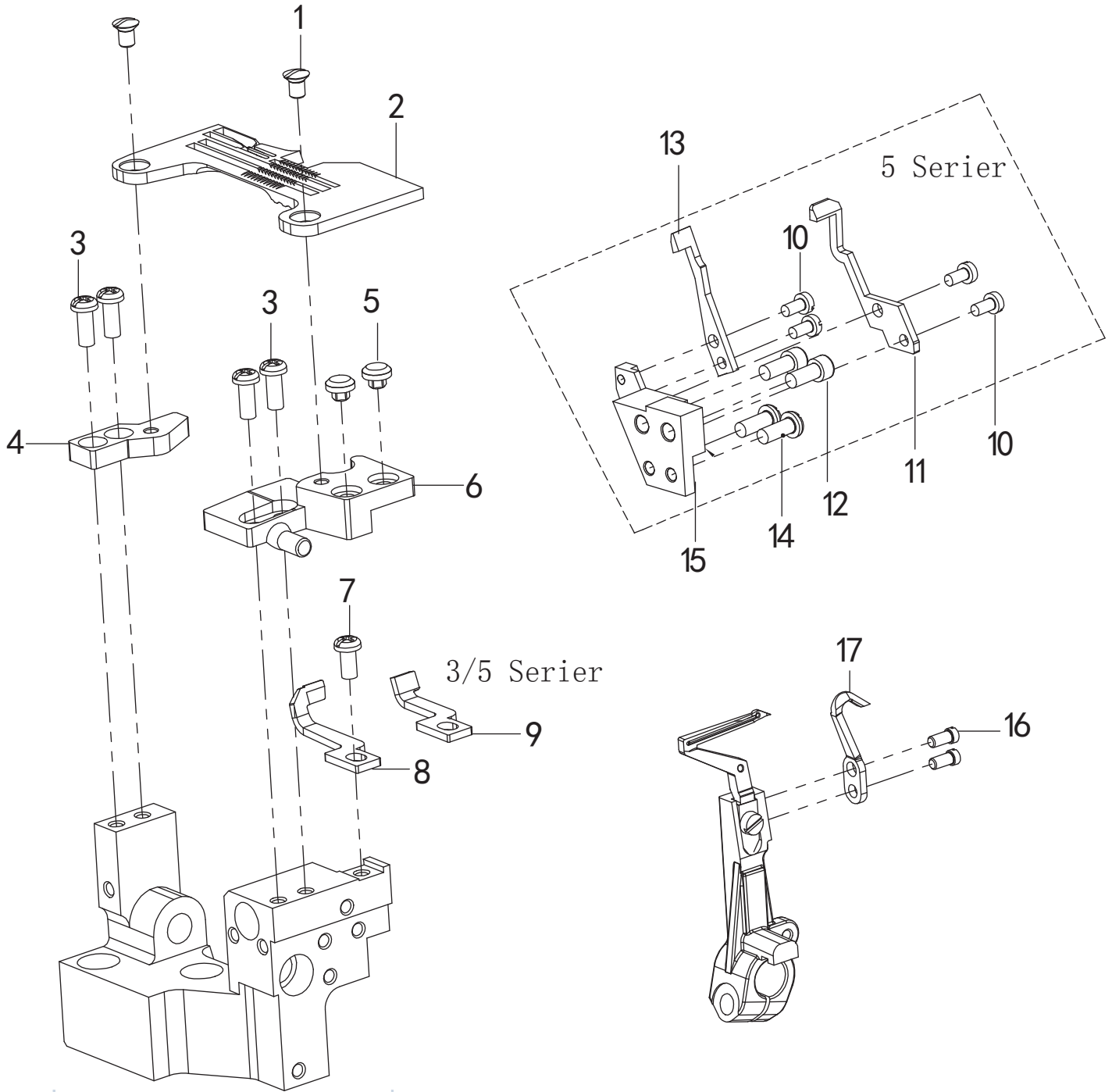
4 Serier



九、针杆部分 (2) /Need Drive Mechanism (2)

序号 Ref. No	图号 Part. No	零件名称 Part name	数量/Number		
			三线 Three-thread	四线 Four-thread	五线 Five-thread
1	188090104	针夹/Pin clamp	1	0	0
2	188090203	针夹过线板/Wire board	1	0	0
3	188090301	针夹过线板螺钉M2.5-3/Screw M2.5-3	1	1	1
4	188090401	机针螺钉M3-3/Needle screw M3-3	1	2	2
5	188090501	机针DCx27-11/Machine needle DCx27-11	1	2	0
5.1	188090502	机针DCx27-14/Machine needle DCx27-14	0	0	2
6	188090102	针夹/Pin clamp	0	0	1
7	188090202	针夹过线板/Wire board	0	0	1
8	188090101	针夹/Pin clamp	0	1	0
9	188090201	针夹过线板/Wire board	0	1	0

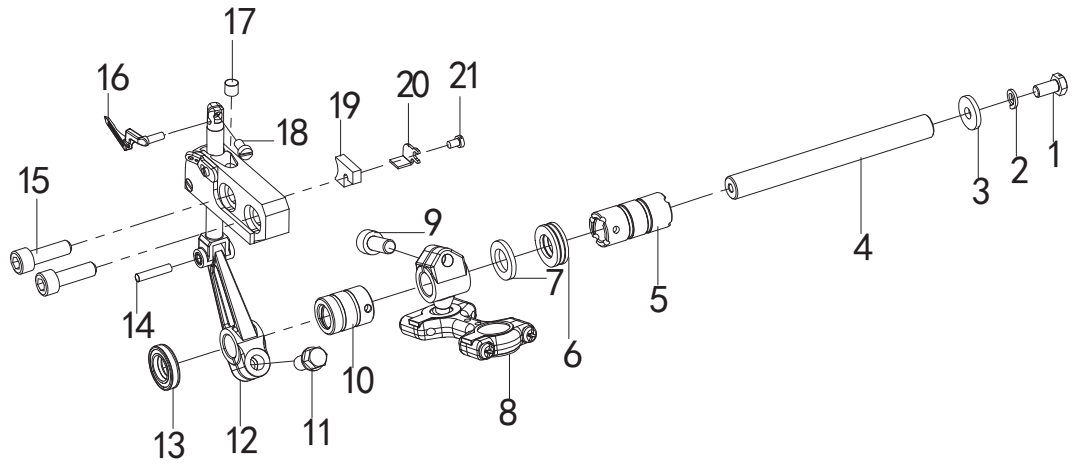
十、针杆部件 (3) /Need Drive Mechanism (3)



十、针杆部件 (3) /Need Drive Mechanism (3)

序号 Ref. No	图号 Part. No	零件名称 Part name	数量/Number		
			三线 Three-thread	四线 Four-thread	五线 Five-thread
1	188100201	针板螺钉M4-7/Screw M4-7	2	2	2
2	188100101	四线针板/Needle plate	0	1	0
2.1	188100102	五线针板/Needle plate	0	0	1
2.2	188100104	三线针板/Needle plate	1	0	0
3	062400812	一带十字盘头螺钉M4-8/Screw M4-8	4	4	4
4	188100401	针板垫块/Needle plate cushion block	1	1	1
5	188030601	减震垫/Cushion	2	2	2
6	188100301	针板座/Needle plate seat	1	1	1
7	062400512	一带十字盘头螺钉M4-5/Screw M4-5	1	1	1
8	188100501	四线前护针/Front needle guard	0	1	0
9	188100502	三、五线前护针/Front needle guard	1	0	1
10	060030612	平头螺钉M3-6/Screw M3-6	0	0	4
11	188100901	链线前护针/Needle guard	0	0	1
12	188250114	链线护针座螺钉M4-9/Screw M4-9	0	0	2
13	188101001	链线后护针/Needle guard	0	0	1
14	062401012	一带十字盘头螺钉M4-10/Screw M4-10	0	0	2
15	188100801	链线护针座/Needle guard	0	0	1
16	188120602	下弯针护针螺钉/Needle guard screw	2	2	2
17	188100601	四线后护针/Back guard	0	1	0
17.1	188100602	三、五线后护针/Back guard	1	0	1

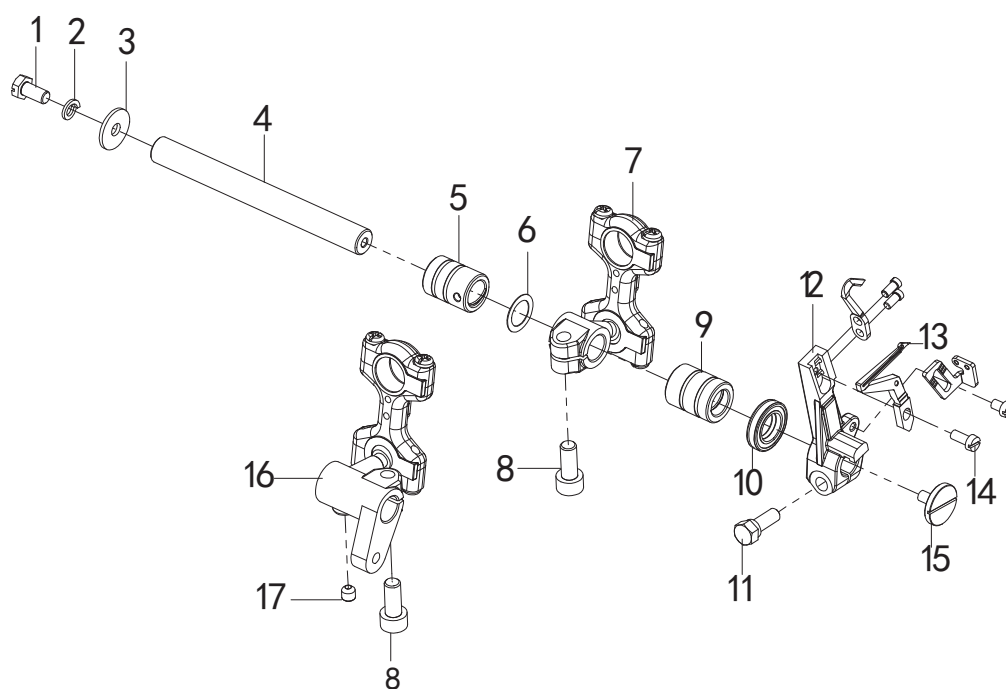
十一、上弯针部件/Upper Loper Drive Mechanism



十一、上弯针部件/Upper Loper Drive Mechanism

序号 Ref. No	图号 Part. No	零件名称 Part name	数量/Number		
			三线 Three-thread	四线 Four-thread	五线 Five-thread
1	188110101	外六角开槽螺钉M5-10/Screw M5-10	1	1	1
2	028050246	弹簧垫圈/Spring washer	1	1	1
3	188110301	摩擦垫圈/Friction washer	1	1	1
4	188110402	上弯针轴/Upper bending needle shaft	1	1	1
5	188110501	上弯针轴后套/Axle sleeve	1	1	1
6	188110702	平面轴承/Plane bearing	1	1	1
7	188111401	平垫圈/Washer	0	1	0
8	188040801-4	上弯针球连杆组件/Needle ball link asm	1	1	1
9	018601232	内六角圆柱头螺钉M6X0.75-12/Screw M6X0.75-12	1	1	1
10	188110801	上弯针轴前套/Axle sleeve	1	1	1
11	188080601	针杆摆动架螺钉M6-12/Screw M6-12	1	1	1
12	188111001	上弯针座组件/Block components	1	1	1
13	188110901	上弯针轴密封圈/Sealing linoleum	1	1	1
14	188081701	针杆摆动架销棉线/Cotton	1	1	1
15	018061632	内六角圆柱头螺钉M6-12/Screw M6-12	2	2	2
16	188111301	上弯针 四线/Upper looper	0	1	0
16.1	188111302	上弯针 五线/Upper looper	1	0	1
17	188111102	上弯针座油毡 小 圆柱形/Seat linoleum	1	1	1
18	060350612	平头螺钉M3.5-6/Screw M3.5-6	1	1	1
19	188111101	上弯针座油毡/Seat linoleum	1	1	1
20	188111201	上弯针座油毡压板/Linoleum press board	1	1	1
21	188250101	压线板螺钉M3-5/Screw M3-5	1	1	1

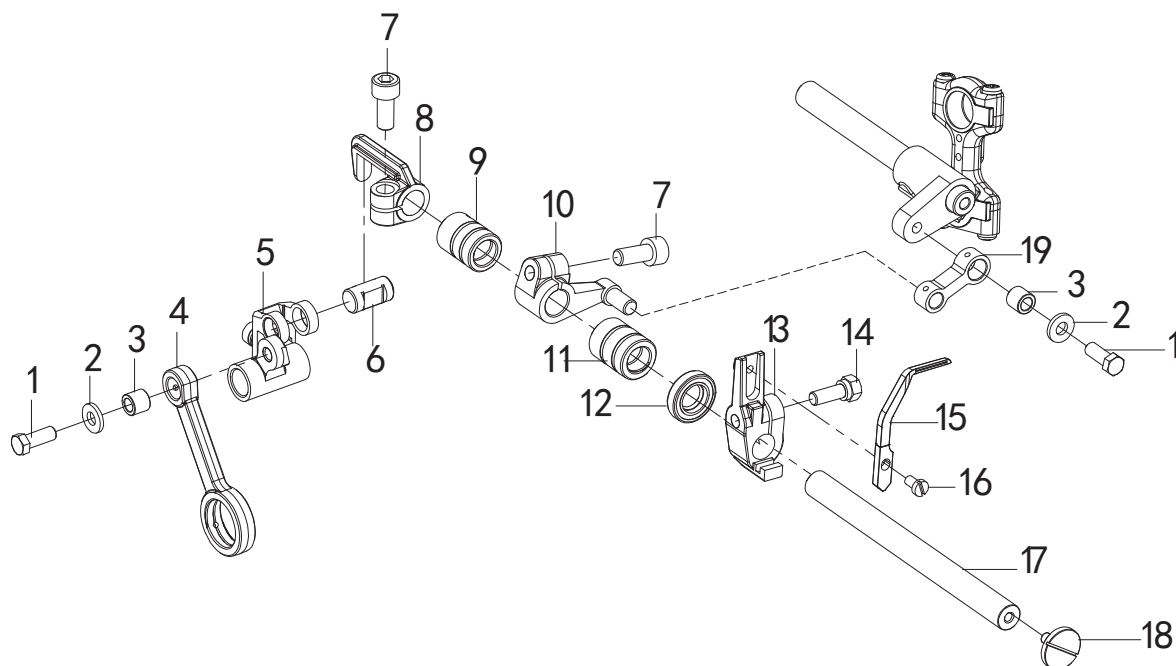
十二、下弯针部件/Lower Looper Drive Mechanism



十二、下弯针部件/Lower Looper Drive Mechanism

序号 Ref. No	图号 Part. No	零件名称 Part name	数量/Number		
			三线 Three-thread	四线 Four-thread	五线 Five-thread
1	188110101	外六角开槽螺钉M5-10/Screw M5-10	1	1	1
2	028050246	弹簧垫圈/Spring washer	1	1	1
3	188110301	摩擦垫圈/Friction washer	1	1	1
4	188110401	弯针轴/Bending needle shaft	1	1	1
5	188120101	下弯针轴后套/Axle sleeve	1	1	1
6	188110701	摩擦圈/Frictionring	1	1	1
7	188040801-1	下弯针球连杆组件/Needle ball link asm	1	1	0
8	018601232	内六角圆柱头螺钉M6X0.75-12/Screw M6X0.75-12	1	1	1
9	188110801	上弯针轴前套/Axle sleeve	1	1	1
10	188110901	上弯针轴密封圈/Sealing linoleum	1	1	1
11	188120501	弯针架螺钉M5-13/Screw M5-13	1	1	1
12	188120201	下弯针架/Down looper	1	1	1
13	188120401	下弯针/Downward bending needle	1	1	1
14	188120601	下弯针螺钉M3.5-6/Screw M3.5-6	1	1	1
15	188120301	弯针架调节螺钉M4/Screw M4	1	1	1
16	188040802-1	下弯针球组件/Needle ball link asm	0	0	1
17	014500532	内六角凹端紧定螺钉M5-5/crew M5-5	0	0	1

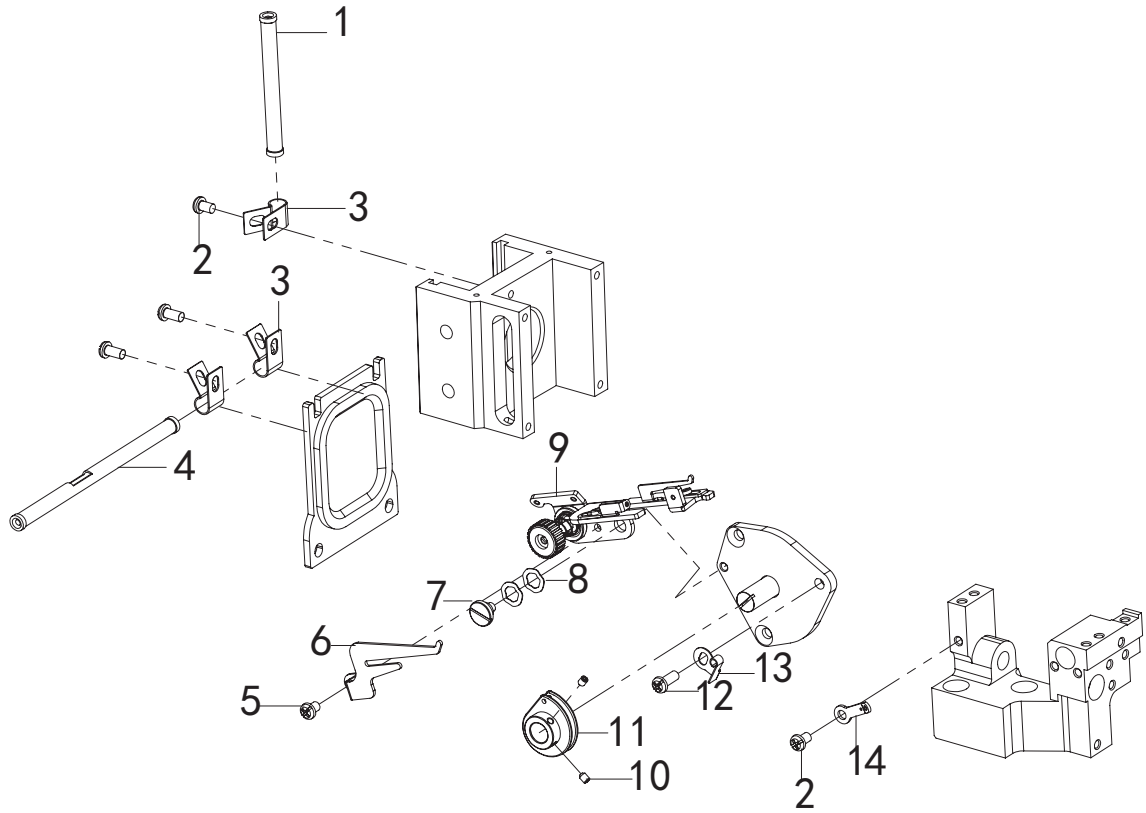
十三、二重环弯针机构 (1) /Chainstitch Looper Drive Mechanism (1)



十三、二重环弯针机构 (1) /Chainstitch Looper Drive Mechanism (1)

序号 Ref. No	图号 Part. No	零件名称 Part name	数量/Number		
			三线 Three-thread	四线 Four-thread	五线 Five-thread
1	188161001	牙架螺钉M5-13/Screw M5-13	0	0	2
2	188160901	连杆套摩擦圈/Friction ring	0	0	2
3	188160801	送布小连杆套/Connecting rod sleeve	0	0	2
4	188130201	前弯针驱动连杆/Front looper driving link	0	0	1
5	188130101	滑动座组件/Sliding seat assembly	0	0	1
6	188130501	驱动曲柄销/Drive crank pin	0	0	1
7	018601232	内六角圆柱头螺钉M6-0.75X12/Screw M6-0.75X12	0	0	2
8	188130601	驱动座/Drive seat	0	0	1
9	188120101	下弯针轴后套/Back sleeve of upper looper shaft	0	0	1
10	188130701	前弯针曲柄/Front bending needle crank	0	0	1
11	188110801	上弯针轴前套/Upper looper shaft front sleeve	0	0	1
12	188110901	弯针轴密封圈/Sealing ring	0	0	1
13	188131001	前弯针架/Front looper	0	0	1
14	188120501	弯针架螺钉M5-13/Screw M5-13	0	0	1
15	188131101	前弯针/Forward looper	0	0	1
16	188120601	下弯针螺钉M3.5-6/Screw M3.5-6	0	0	1
17	188130901	前弯针轴/Front looper shaft	0	0	1
18	188120301	弯针架调节螺钉M4/Screw M4	0	0	1
19	188130801	前弯针连杆/Needle connecting rod	0	0	1

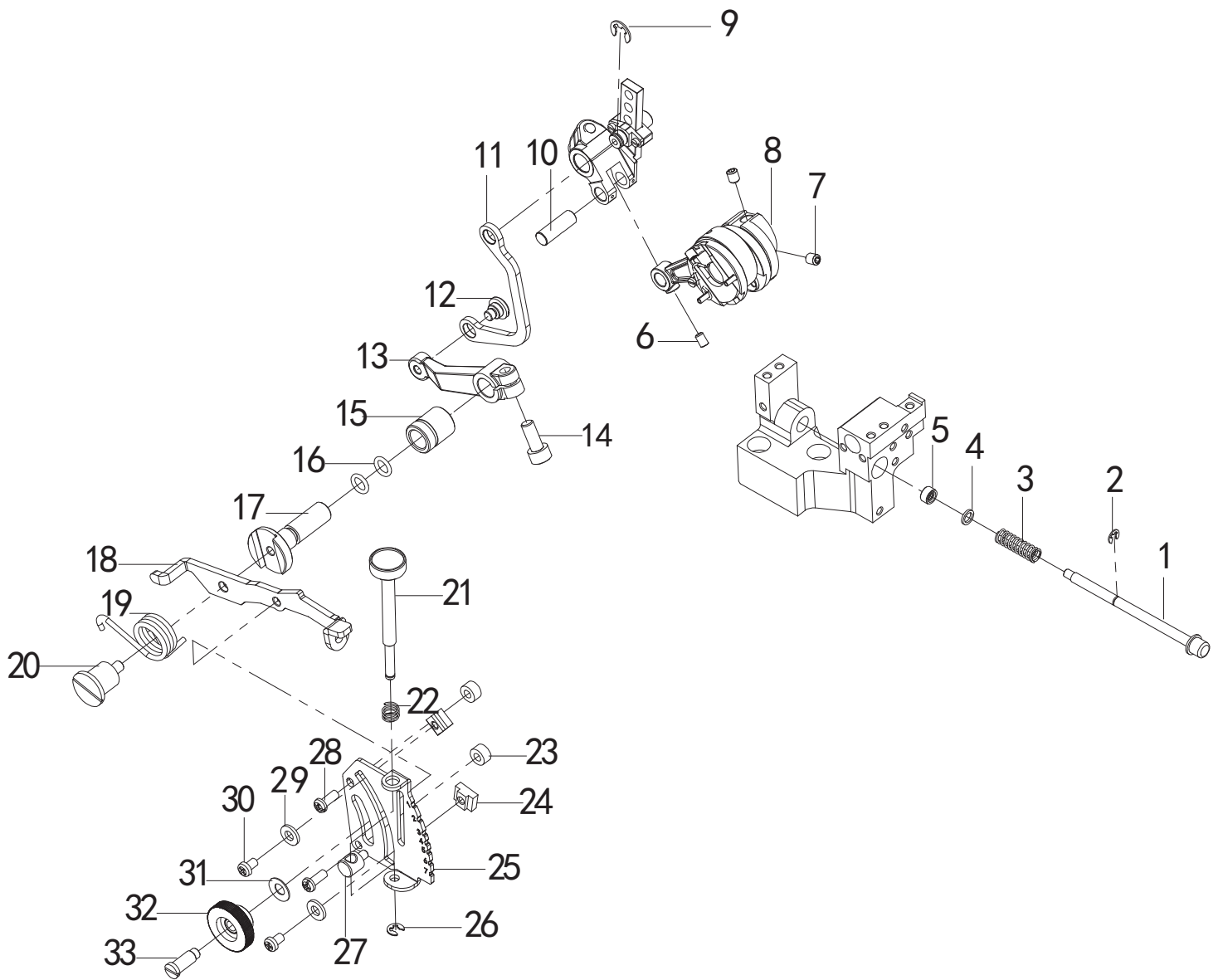
十四、二重环弯针机构 (2) /Chainstitch Looper Drive Mechanism (2)



十四、二重环弯针机构 (2) /Chainstitch Looper Drive Mechanism (2)

序号 Ref. No	图号 Part. No	零件名称 Part name	数量/Number		
			三线 Three-thread	四线 Four-thread	五线 Five-thread
1	188140101	五线过线管/Five-wire cable	0	0	1
2	062400612	一带十字盘头螺钉M4-6/Screw M4-6	0	0	2
3	188140201	过线管夹/Line pipe clamp	0	0	3
4	188140301	长过线管/Longer than line pipe	0	0	1
5	062400512	一带十字盘头螺钉M4-5/Screw M4-5	0	0	1
6	188140501	分线板/Breakout board	0	0	1
7	188021001	护目罩支架段螺钉M4/Segment screw M4	0	0	1
8	188021101	波形垫片/Wave gasket	0	0	2
9	188140401	链线导线架组件/Chain wire lead frame asm	0	0	1
10	188090401	机针螺钉M3-3/Needle screw M3-3	0	0	2
11	188140701	打线凸轮/Wire cam	0	0	1
12	062400812	一带十字盘头螺钉M4-8/Screw M4-8	0	0	1
13	188140801	导线架限位簧/Lead frame limit spring	0	0	1
14	188140901	链线过线板/Chain line passin board	0	0	1

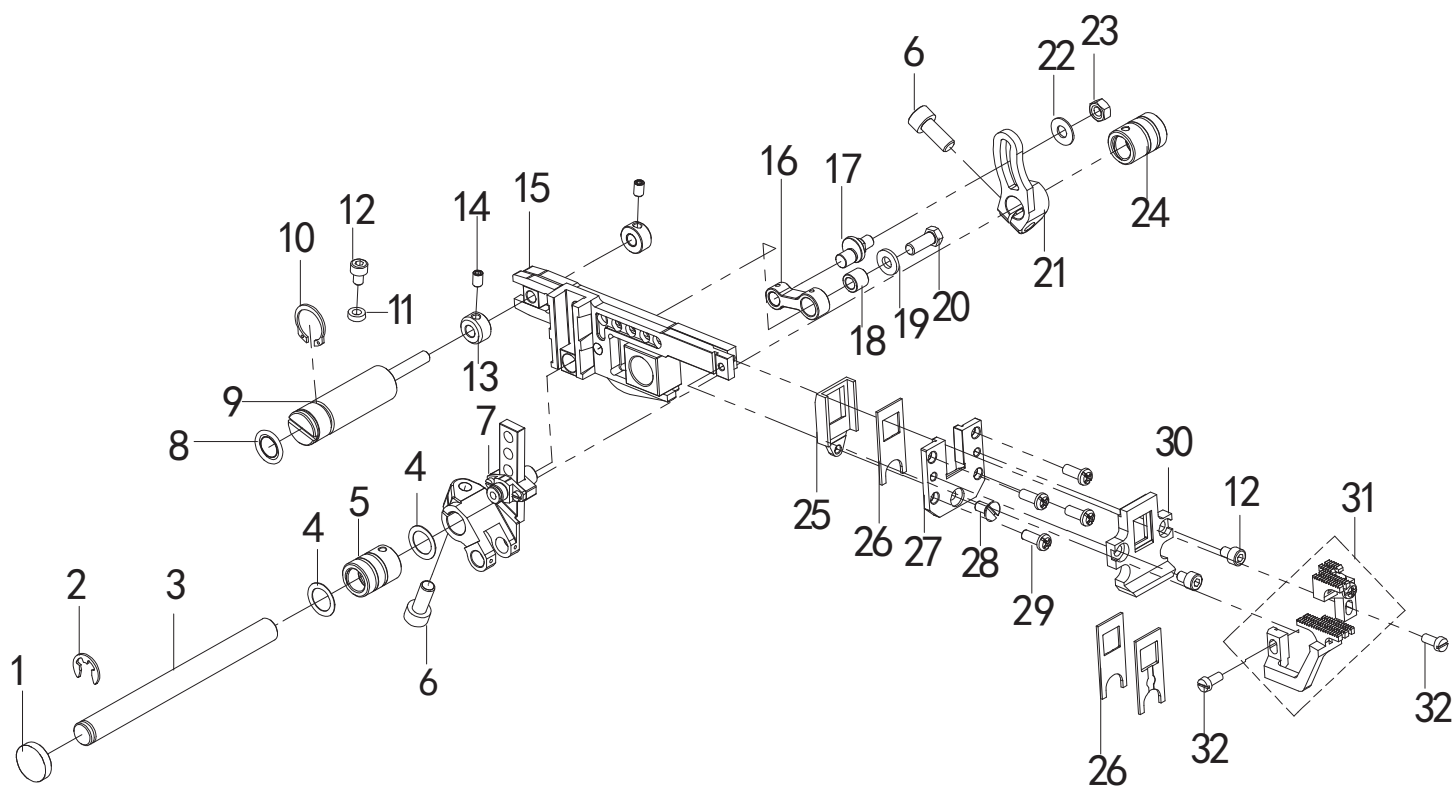
十五、差动调节机构/Feed Mechanism



十五、差动调节机构/Feed Mechanism

序号 Ref. No	图号 Part. No	零件名称 Part name	数量/Number		
			三线 Three-thread	四线 Four-thread	五线 Five-thread
1	188150201	针距调节销/Adjustment pin	1	1	1
2	048030342	开口挡圈E3/Circlip E3	1	1	1
3	188150301	针距调节弹簧/Spring	1	1	1
4	188150401	垫片/Washer	1	1	1
5	188150501	针距调节销防油圈/Oil ring	1	1	1
6	012400532	内六角平端紧定螺钉M4-5/Screw M4-5	1	1	1
7	014500532	内六角凹端紧定螺钉M5-5/Screw M5-5	2	2	2
8	188150101	送布凸轮组件/Feed cam assembly	1	1	1
9	048060342-1	开口卡簧E6（薄）/Circlip E6	1	1	1
10	188080501	针杆传动轴曲柄销/Drive shaft crank pin	1	1	1
11	188150601	差动连杆/Differential link	1	1	1
12	188150801	差动连杆螺钉/Differential link Screw	1	1	1
13	188150701	差动调节曲柄/Differential adjusting crank	1	1	1
14	018601232	内六角圆柱头螺钉M6X0.75-12/Screw M6X0.75-12	1	1	1
15	188150901	差动轴套/Differential cover	1	1	1
16	188152201	差动轴O形圈/Differential shaft O-ring	2	2	2
17	188151001	差动轴/Differential shaft	1	1	1
18	188151101	差动扳手/Differential wrench	1	1	1
19	188151201	差动扳手扭簧/Wench torsion spring	1	1	1
20	188151301	差动扳手螺钉/Differential wrench screw	1	1	1
21	188152001	差动调节长螺丝/Long screw	1	1	1
22	188152301	差动调节销弹簧/Adjustment pin spring	1	1	1
23	188151801	刻度板垫圈/Scale plate washer	2	2	2
24	188151901	差动板手限位块/Limit block	2	2	2
25	188151701	差动刻度板/Differential scale	1	1	1
26	048035342	开口挡圈E3.5/Circlip E3.5	1	1	1
27	188152101	差动调节销/Differential adjustment pin	1	1	1
28	062401212	一带十字盘头螺钉M4-12/Screw M4-12	2	2	2
29	025050132	垫圈 5/Washer 5	2	2	2
30	062400612	一带十字盘头螺钉 M4-6/Screw M4-6	2	2	2
31	188151601	蝶形垫圈/Washer	1	1	1
32	188151501	差动旋钮螺母/Nut	1	1	1
33	188151401	差动旋钮螺钉/Screw	1	1	1

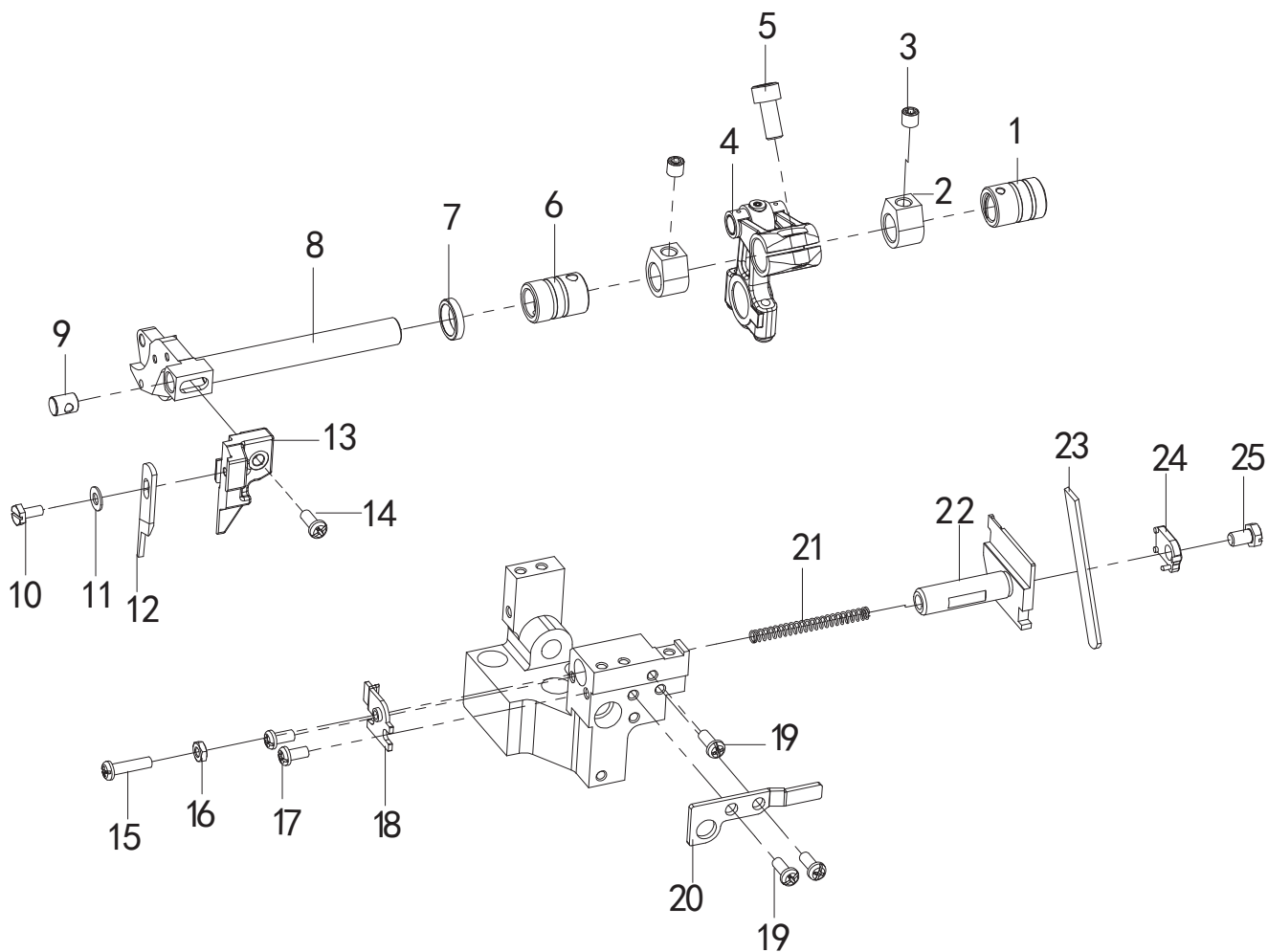
十六、送布机构/Feed Mechanism



十六、送布机构/Feed Mechanism

序号 Ref. No	图号 Part. No	零件名称 Part name	数量/Number		
			三线 Three-thread	四线 Four-thread	五线 Five-thread
1	188160101	送布轴帽/Feed shaft cap	1	1	1
2	048070342	开口挡圈E7/Circlip E7	1	1	1
3	188160201	送布轴/Feed shaft	1	1	1
4	188110701	摩擦圈/Friction ring	2	2	2
5	188110801	上弯针轴前套/Shaft front sleeve	1	1	1
6	018601232	内六角圆柱头螺钉M6X0.75-12/Screw M6X0.75-12	2	2	2
7	188160301	差动送布曲柄组件/Crank assembly	1	1	1
8	188161601	偏心销0形圈/Eccentric pin 0-ring	1	1	1
9	188161401	牙架偏心销/Tooth frame eccentric pin	1	1	1
10	188161701	偏心销卡簧/Eccentric pin circlip	1	1	1
11	188161801	偏心销防油0形圈/Pin oil-proof 0-ring	1	1	1
12	018400532	内六角圆柱头螺钉M4-5/Screw M4-5	3	3	3
13	188161501	牙架挡圈/Tooth frame retaining ring	2	2	2
14	014040432	内六角凹端紧定螺钉M4-4/Screw M4-4	2	2	2
15	188161101	牙架组件/Tooth frame components	1	1	1
16	188160701	送布小连杆/Small link	1	1	1
17	188160601	送布曲柄偏心销/Feed crank eccentric pin	1	1	1
18	188160801	送布小连杆套/Small connecting rod set	1	1	1
19	188160901	连杆套摩擦圈/Friction ring	1	1	1
20	188161001	牙架螺钉M5-13/Screw M5-13	1	1	1
21	188160501	送布曲柄/Feed crank	1	1	1
22	025050132	平垫圈 5/Washer 5	1	1	1
23	021500212	螺母M5/Nut M5	1	1	1
24	188120101	下弯针轴后套/Back sleeve of upper looper shaft	1	1	1
25	188161901	牙架挡油板/Tooth frame oil baffle	1	1	1
26	188162201	牙架刮油片/Tooth frame oil scraper	3	3	3
27	188162001	牙架导轨/Tooth frame guide	1	1	1
28	188162402	牙架挡油板螺钉M4-8/Screw M4-8	1	1	1
29	062400812	一带十字盘头螺钉M4-8/Screw M4-8	4	4	4
30	188162101	密封导架/Seal guide	1	1	1
31	188162301	送布牙组件/Feed dog assembly	0	1	0
31.1	188162302	送布牙组件/Feed dog assembly	0	0	1
31.2	188162305	送布牙组件/Feed dog assembly	1	0	0
32	188162401	牙齿螺钉/Screw	2	2	2

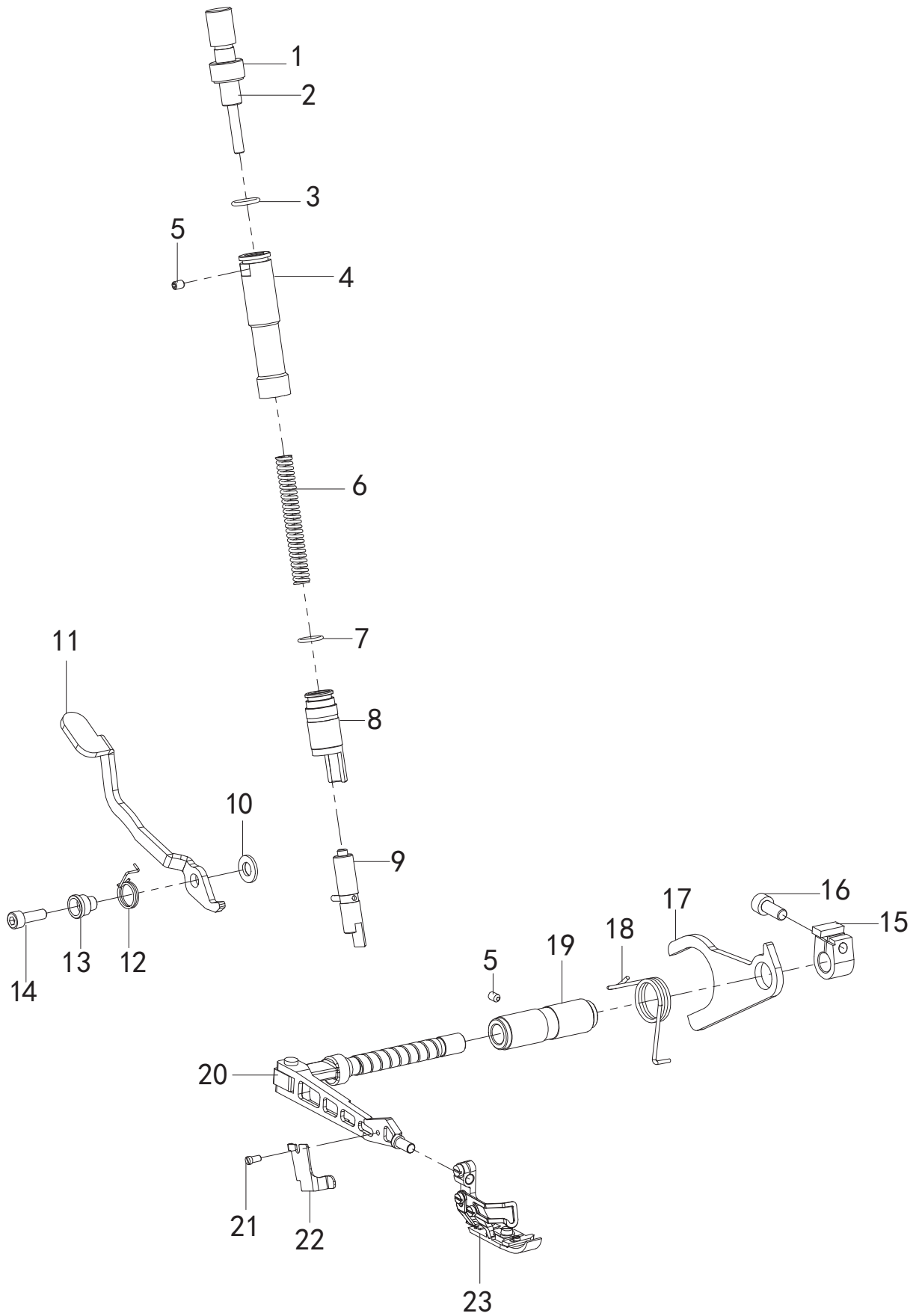
十七、剪布机构/Knife Drive Mechanism



十七、剪布机构/Knife Drive Mechanism

序号 Ref. No	图号 Part. No	零件名称 Part name	数量/Number		
			三线 Three-thread	四线 Four-thread	五线 Five-thread
1	188120101	下弯针轴后套/Back sleeve of upper looper shaft	1	1	1
2	188170101	上刀轴挡圈/Retaining ring	2	2	2
3	014600532	内六角凹端紧定螺钉M6X0.75-5/Screw M6X0.75-5	2	2	2
4	188040801-3	切刀轴球连杆组件/Cutter shaft ball link asm	1	1	0
4.1	188040802-3	切刀轴球连杆组件/Cutter shaft ball link asm	0	0	1
5	018601232	内六角圆柱头螺钉M6X0.75-12/Screw M6X0.75-12	1	1	1
6	188170301	上刀轴前套/Front cover	1	1	1
7	188170401	上刀轴前套密封圈/Sealing ring	1	1	1
8	188170501	上刀轴/Upper knife shaft	1	1	1
9	188170601	上刀架销/Upper tool holder pin	1	1	1
10	188171601	上刀螺钉M3.5-8/Screw M3.5-8	1	1	1
11	025040132	垫圈 4/Washer 4	1	1	1
12	188170801	上切刀/Upper cutter	1	1	1
13	188170701	上刀架/Upper tool holder	1	1	0
13.1	188170702	上刀架/Upper tool holder	0	0	1
14	062401212	一带十字盘头螺钉M4-12/Screw M4-12	1	1	1
15	062401012	一带十字盘头螺钉M4-10/Screw M4-10	1	1	1
16	021400306	螺母M4-3/Nut M4-3	1	1	1
17	062400612	一带十字盘头螺钉M4-6/Screw M4-6	2	2	2
18	188171401	下刀弹簧压板/Spring plate	1	1	1
19	062400812	一带十字盘头螺钉M4-8/Screw M4-8	3	3	3
20	188171501	下刀架定位板/Positioning plate	1	1	1
21	188171301	下刀弹簧/Lower knife spring	1	1	1
22	188171001	下刀架/Lower tool rest	1	1	0
22.1	188171002	下刀架/Lower tool rest	0	0	1
23	188170901	下切刀/Lower cutter	1	1	1
24	188171101	下刀压板/Pressure plate	1	1	1
25	188110101	外六角开槽螺钉M5-10/Screw M5-10	1	1	1

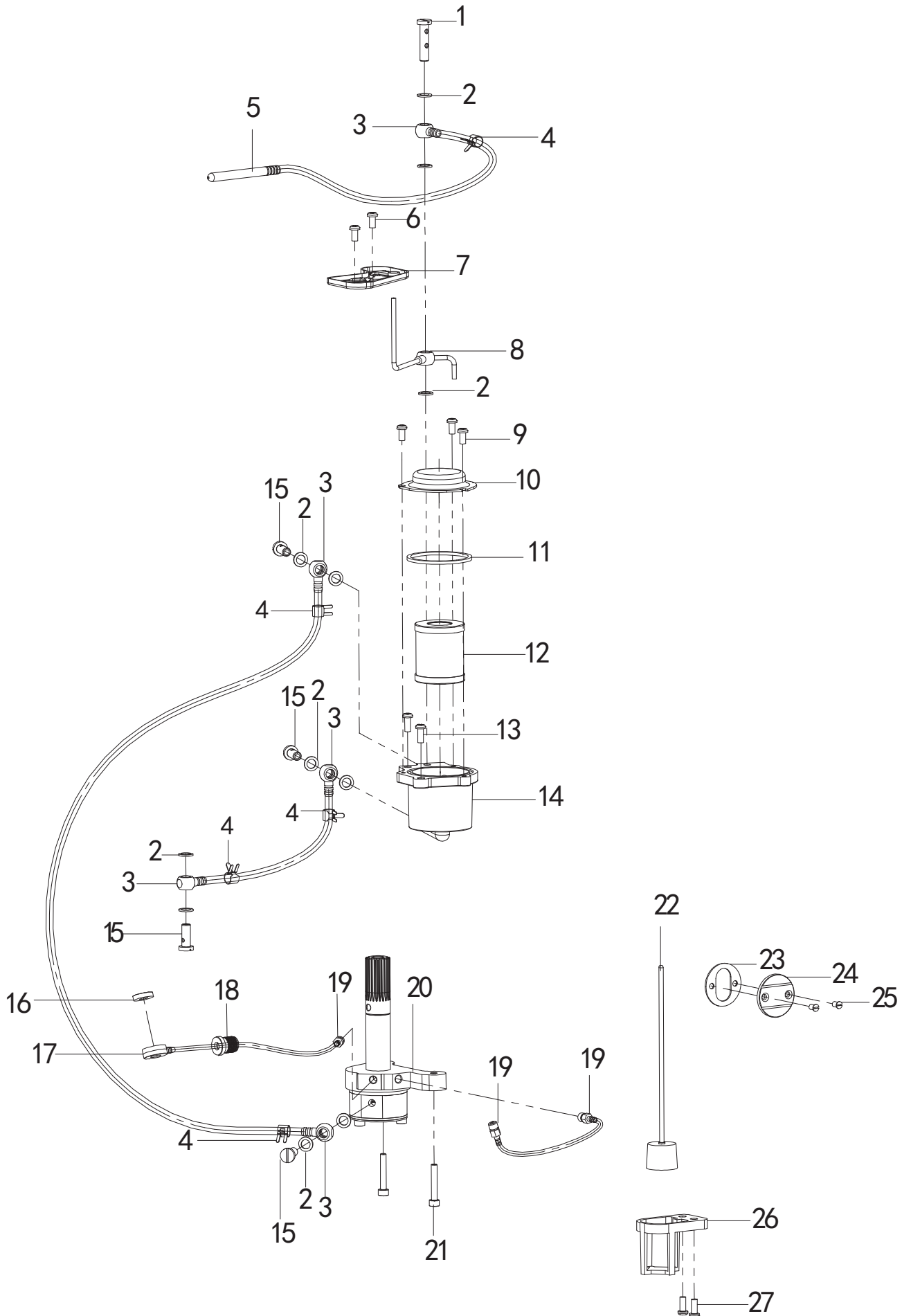
十八、抬压脚机构/Presser Foot Mechanism



十八、抬压脚机构/Presser Foot Mechanism

序号 Ref. No	图号 Part. No	零件名称 Part name	数量/Number		
			三线 Three-thread	四线 Four-thread	五线 Five-thread
1	188181301	调压螺母/Pressure regulating nut	1	1	1
2	188181201	调压螺钉/Pressure regulating screw	1	1	1
3	188181501	O形圈/O-ring	1	1	1
4	188181402	压杆上套/Pressure rod upper sleeve	1	1	1
5	012400532	内六角平端紧定螺钉M4-6/Screw M4-6	2	2	2
6	188181701	调压弹簧/Pressure regulating spring	1	1	1
7	188181601	O形圈/O-ring	1	1	1
8	188181901	压杆下套/Pressure rod lower sleeve	1	1	1
9	188182001	压杆/Pressure bar	1	1	1
10	188182101	压脚扳手垫圈/Washer	1	1	1
11	188182201	压脚扳手/Foot wrench	1	1	1
12	188182301	压脚扳手扭簧/Torsion spring	1	1	1
13	188182401	压脚扳手衬套/Presser foot wrench bushing	1	1	1
14	018501432	内六角圆柱头螺钉M5-14/Screw M5-14	1	1	1
15	188180701	抬压脚轴复位圈/Reset circle	1	1	1
16	018601232	内六角圆柱头螺钉M6X0.75-12/Screw M6X0.75-12	1	1	1
17	188180611	抬压脚轴杠杆/Presser foot shaft lever	1	1	1
18	188180811	杠杆复位簧/Lever return spring	1	1	1
19	188180901	抬压脚轴套/Presser foot shaft sleeve	1	1	1
20	188181001	抬压脚轴组件/Presser foot shaft asm	1	1	1
21	188250101	压线板螺钉M4-4/Screw M4-4	1	1	1
22	188181102	护指片/Finger guard	1	1	1
23	188182501	压脚组件 四线/Presser foot assembly	0	1	0
23.1	188182502	压脚组件 五线/Presser foot assembly	0	0	1
23.2	188182504	压脚组件 三线/Presser foot assembly	1	0	0

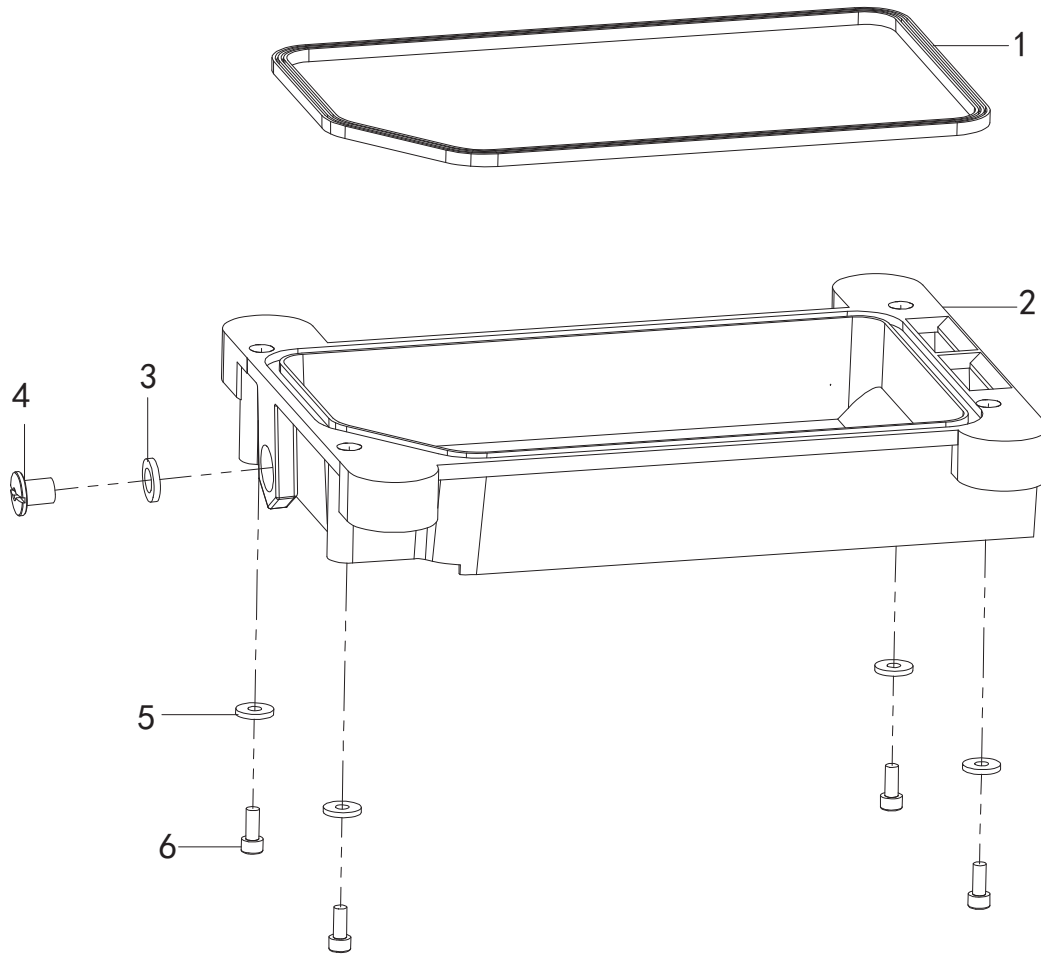
十九、供油机构 (1) / Lubrination Mechanism (1)



十九、供油机构 (1) /Lubrinarion Mechanism (1)

序号 Ref. No	图号 Part. No	零件名称 Part name	数量/Number		
			三线 Three-thread	四线 Four-thread	五线 Five-thread
1	188190301	过油螺钉 (长) /Oil screw	1	1	1
2	168011801	过油螺钉垫片/Oil screw gasket	11	11	11
3	188190601-1	油管接头/Oil pipe joint	5	5	5
4	124127801	油管夹 \varnothing 7/Tubing clamp	5	5	5
5	188010401	直喷油管/Direct nozzle	1	1	1
6	062400612	一带十字盘头螺钉M4-6/Screw M4-6	2	2	2
7	188190201	上油盘/Oil pan	1	1	1
8	188190501	喷油管/Fuel injection pipe	1	1	1
9	062400612	一带十字盘头螺钉M4-6/Screw M4-6	3	3	3
10	188190701	滤油器上盖/Oil filter upper cover	1	1	1
11	188041901	右端盖O形圈/Right end cap O-ring	1	1	1
12	188190901	滤油器/Oil filter	1	1	1
13	062401212	一带十字盘头螺钉M4-12/Screw M4-12	2	2	2
14	188191001	滤油器缸/Oil filter cylinder	1	1	1
15	188190302	过油螺钉 (短) /Oil screw	4	4	4
16	188201001	针杆回油毡/Back to linoleum	1	1	1
17	188200901	针杆回油套/Oil return sleeve	1	1	1
18	188200601	回油管塞/Oil return pipe plug	1	1	1
19	188200501	油管接头/Hose connector	3	3	3
20	188190101	油泵组件/Oil pump components	1	1	1
21	018401436	内六角圆柱头螺钉M4-14/Screw M4-14	2	2	2
22	188201501	油标/Oil mark	1	1	1
23	168063501	油窗垫/Oil window gasket	1	1	1
24	168063401	油窗/Oil window	1	1	1
25	168063801	螺钉SM9/64" X40-6/Screw SM9/64" X40-6	2	2	2
26	1188201601	油标支架/Oil standard bracket	1	1	1
27	062400812	一带十字盘头螺钉M4-8/Screw M4-8	2	2	2

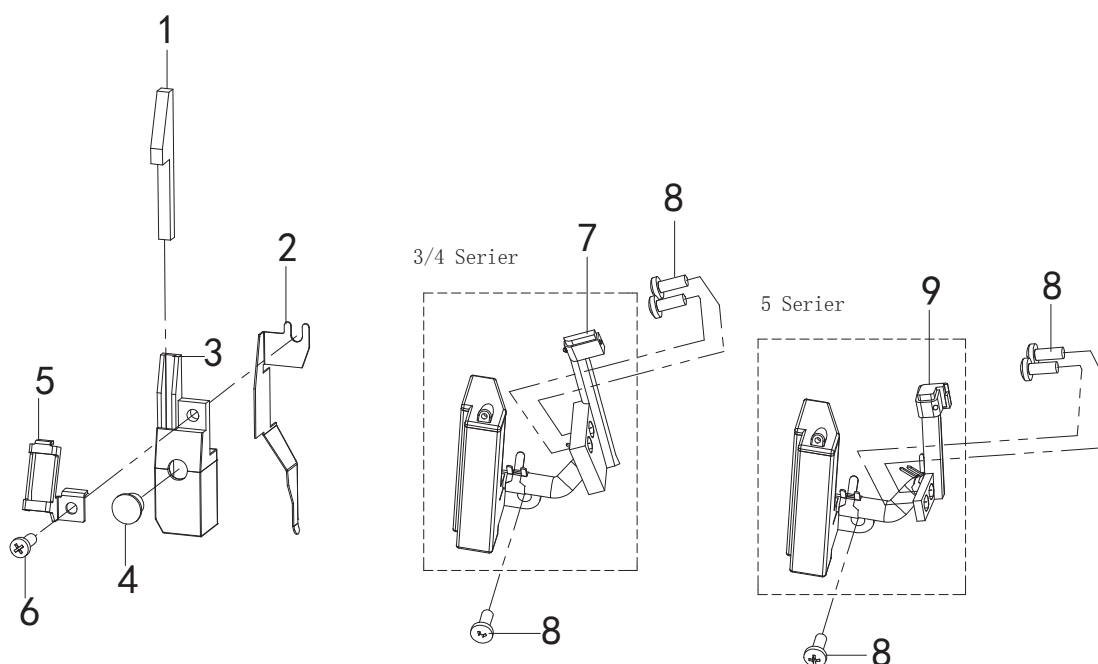
二十、供油机构 (2) /Lubirinarion Mechanism (2)



二十、供油机构 (2) /Lubirinarion Mechanism (2)

序号 Ref. No	图号 Part. No	零件名称 Part name	数量/Number		
			三线 Three-thread	四线 Four-thread	五线 Five-thread
1	188200401	油盘密封垫/Gasket	1	1	1
2	188200101	油盘/Oil pan	1	1	1
3	188200201	放油螺钉油封/Oil seal	1	1	1
4	188200301	放油螺钉/Screw	1	1	1
5	188201401	油盘螺钉垫片/Gasket	4	4	4
6	018501232	内六角圆柱头螺钉M5-12/Screw M5-12	4	4	4

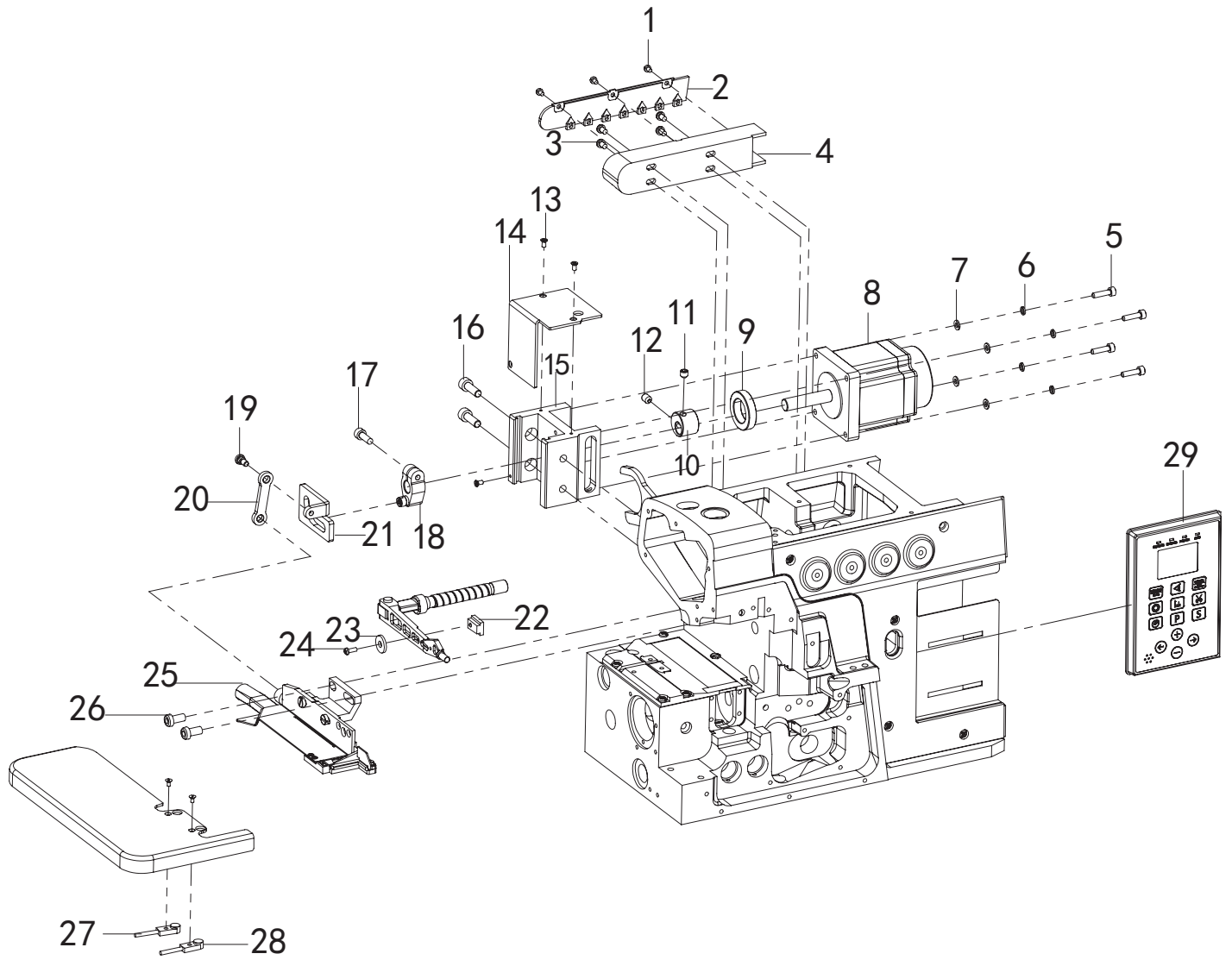
二十一、HR装置机构部件/H.R.Device



二十一、HR装置机构部件/H.R.Device

序号 Ref. No	图号 Part. No	零件名称 Part name	数量/Number		
			三线 Three-thread	四线 Four-thread	五线 Five-thread
1	188210101	上硅油盒毡/Linoleum felt	1	1	0
1.1	188210102	上硅油盒毡/Linoleum felt	0	0	1
2	188210601	硅油盒挡板/Box bezel	1	1	1
3	188210201	上硅油盒/Oil box	1	1	1
4	188210401	上硅油盒橡皮塞/Oil tank rubber plug	1	1	1
5	188210501	上硅油盒支架/Oil tank bracket	1	1	0
5.1	188210502	上硅油盒支架/Oil tank bracket	0	0	1
6	062401012	一带十字盘头螺钉M4-10/Screw M4-10	1	1	1
7	188210701	机针冷却组件/Needle cooling unit	1	1	0
8	062401212	一带十字盘头螺钉M4-12/Screw M4-12	3	3	3
9	188210702	机针冷却组件/Needle cooling unit	0	0	1

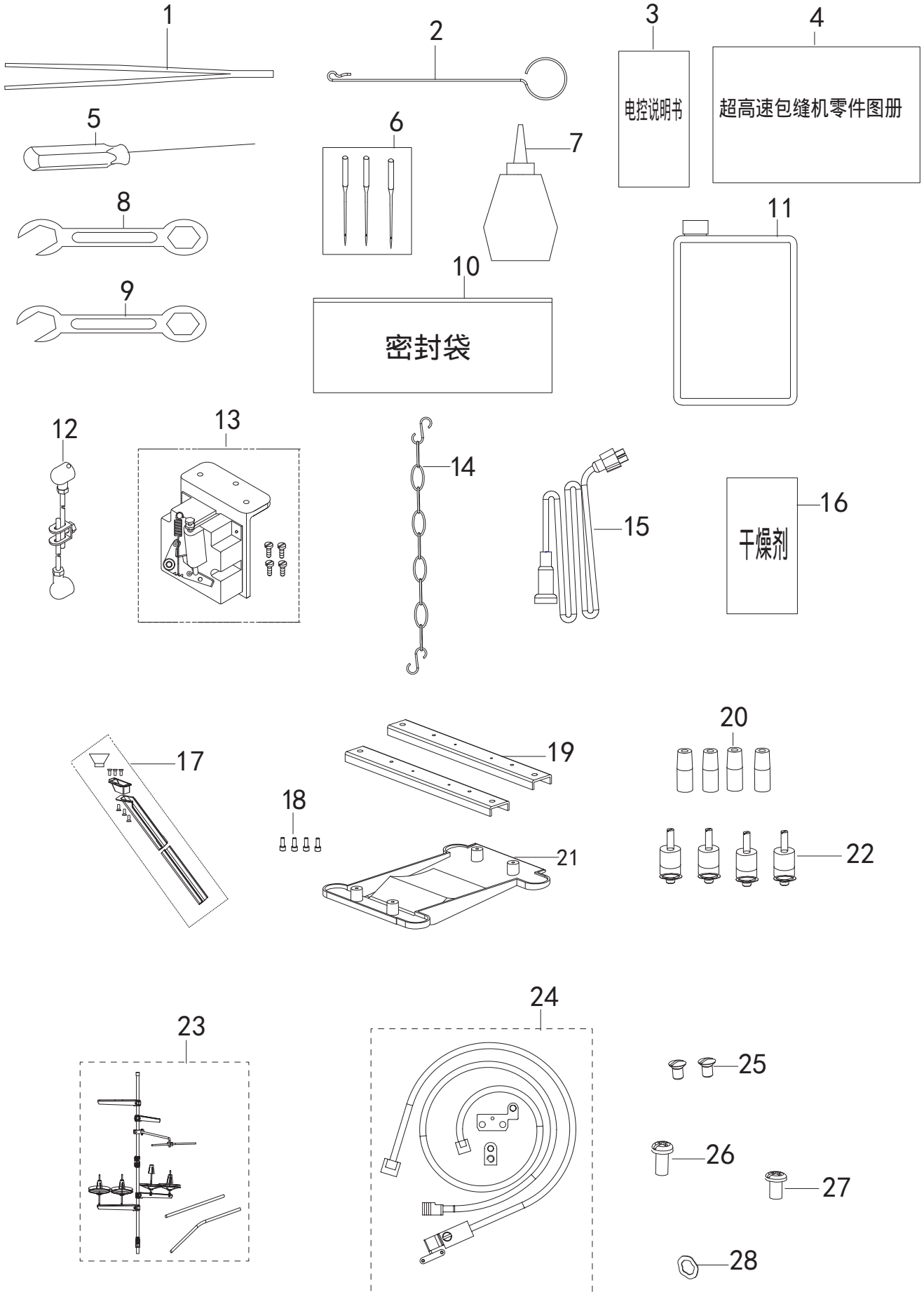
二十二、专用零件/Specific



二十二、专用零件/Specific

序号 Ref. No	图号 Part. No	零件名称 Part name	数量/Number		
			三线 Three-thread	四线 Four-thread	五线 Five-thread
1	188250101	压线板螺钉M3-5/Screw M3-5	3	3	3
2	188221101	过线盒盖/Cable box cover	1	1	1
3	062400612	一带十字盘头螺钉M4-6/Screw M4-6	2	2	2
4	188221001	过线盒/Line box	1	1	1
5	018401632	内六角圆柱头螺钉M4-16/Screw M4-16	4	4	4
6	028040246	弹簧垫圈T4/Elastic gasket T4	4	4	4
7	025040132	平垫圈4/Washer 4	4	4	4
8	188260811	剪线电机/Wire shearing motor	1	1	1
9	188260901	深沟球轴承/Deep groove ball bearing	1	1	1
10	188260511	抬压脚凸轮/Presser foot lifting cam	1	1	1
11	012600636	内六角紧定螺钉M6X0.75-6/Screw M6X0.75-6	1	1	1
12	014060832	内六角紧定螺钉M6X0.75-8/Screw M6X0.75-8	1	1	1
13	064300633	一字沉头螺钉M3-6/Screw M3-6	3	3	3
14	188261101	电机座罩/Motor base cover	1	1	1
15	188260311	电机安装座/Motor mounting base	1	1	1
16	018061832	内六角圆柱头螺钉M6-18/Screw M6-18	2	2	2
17	018501432	内六角圆柱头螺钉M5-14/Screw M5-14	1	1	1
18	188260401	剪线驱动曲柄组件/Drive crank asm	1	1	1
19	168031301	轴位螺钉SM3/16"X32/Screw SM3/16"X32	1	1	1
20	188261001	切线连杆/Tangent link	1	1	1
21	188260101	剪线驱动板/Tangent drive plate	1	1	1
22	188220501	压脚感应开关/Foot sensor switch	1	1	1
23	188250204	光眼紧固螺钉垫片/Washer	1	1	1
24	062400812	一带十字盘头螺钉M4-8/Screw M4-8	1	1	1
25	188220301	切刀组件/Cutter assembly	1	1	1
26	018601232	内六角圆柱头螺钉M6X0.75-12/Screw M6X0.75-12	2	2	2
27	188220701	缝台后感应装置/Rear position sensor	1	1	1
28	188220601	缝台前感应装置/Front sensor	1	1	1
29	188220801	显示屏组件/Display assembly	1	1	1

二十三、附件部分/Accessories



二十三、附件部分/Accessories

序号 Ref. No	图号 Part. No	零件名称 Part name	数量/Number		
			三线 Three-thread	四线 Four-thread	五线 Five-thread
1	5030401	镊子12cm/Tweezers	1	1	1
2	188241801	线勾/Line hook	0	0	1
3	188242001	说明书 琦星/instructions	1	1	1
4	6050278	零件图册(999)/Parts Atlas	1	1	1
5	188240601	直柄内六角扳手1.5mm/Allen wrench 1.5mm	1	1	1
6	188090501	机针DCx27-11/Machine needle DCx27-11	3	3	0
6.1	188090502	机针DCx27-14/Machine needle DCx27-14	0	0	3
7	188240901	硅油壶/Silicone oil pot	1	1	1
8	188241001	扳手7mm/Wrench 7mm	1	1	1
9	188241101	扳手8mm/Wrench 8mm	1	1	1
10	115160801	密封袋/Sealed bag	1	1	1
11	101121001	大油壶/Big oil pot	1	1	1
12	115151901	控速器 拉杆/Speed control lever	1	1	1
13	115152001	控速器/Speed controller	1	1	1
14	188241701	踏板链条/Pedal chain	1	1	1
15	125122801	电源线/power cord	1	1	1
16	5050961	干燥剂/desiccant	1	1	1
17	188240501	落料斗组件/Drop hopper	1	1	1
18	062400812	一带十字盘头螺钉M4-8/Screw M4-8	4	4	4
19	188240301	托架组件/Bracket assembly	2	2	2
20	188240401	减震垫/Damping pad	4	4	4
21	188240201	888托盘/Tray	1	1	1
22	188240101	托盘固定螺母/Tray fixing nut	4	4	4
23	188233501	线架组件/Wire rack assembly	1	1	0
23.1	188233502	线架组件/Wire rack assembly	0	0	1
24	188220402	缝台安全开关(四件套)/Safety switch	1	1	1
25	064300633	一字沉头螺钉 M3-6/Screw M3-6	2	2	2
26	062401012	一带十字盘头螺钉M4-10/Screw M4-10	1	1	1
27	062400812	一带十字盘头螺钉M4-8/Screw M4-8	1	1	1
28	188250204	光眼紧固螺钉垫片/Washer	1	1	1